

HIBCH antibody [3H5]

Cat. No. GTX84364

Host	Mouse
Clonality	Monoclonal
Isotype	IgG2a
Applications	WB, IHC-P, FCM
Reactivity	Human, Dog

Package
100 µl

Applications

Application Note

*Optimal dilutions/concentrations should be determined by the researcher.

Suggested dilution	Recommended dilution
WB	1:2000
IHC-P	1:50
FCM	1:100

Not tested in other applications.

Calculated MW 43 kDa. ([Note](#))

Properties

Form	Liquid
Buffer	PBS, 1% BSA, 50% Glycerol
Preservative	0.02% Sodium azide
Storage	Store as concentrated solution. Centrifuge briefly prior to opening vial. For short-term storage (1-2 weeks), store at 4°C. For long-term storage, aliquot and store at -20°C or below. Avoid multiple freeze-thaw cycles.
Concentration	0.9 mg/ml (Please refer to the vial label for the specific concentration.)
Immunogen	Full length human recombinant protein of human HIBCH (NP_055177) produced in HEK293T cell.
Purification	Purified by affinity chromatography
Conjugation	Unconjugated

Note

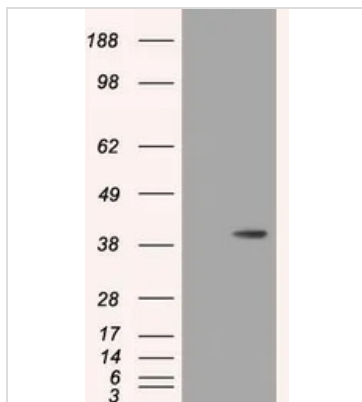
For laboratory research use only. Not for any clinical, therapeutic, or diagnostic use in humans or animals. Not for animal or human consumption.

Purchasers shall not, and agree not to enable third parties to, analyze, copy, reverse engineer or otherwise attempt to determine the structure or sequence of the product.



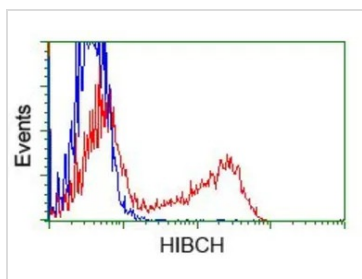
For full product information, images and publications, please visit our [website](#).

DATA IMAGES

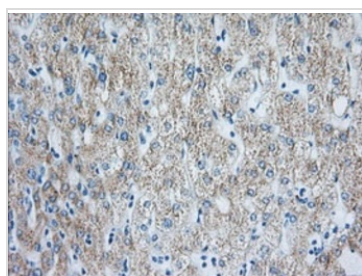
**GTX84364 WB Image**

WB analysis of HEK293T cells transfected with HIBCH plasmid (Right) or empty vector (Left) for 48 hrs using GTX84364 HIBCH antibody [3H5].

Loading : 5 ug per lane

**GTX84364 FCM Image**

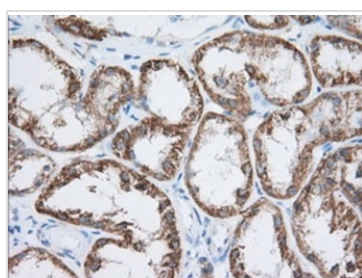
FACS analysis of HEK293T cells transfected with either HIBCH plasmid(Red) or empty vector control plasmid(Blue) using GTX84364 HIBCH antibody [3H5].

**GTX84364 IHC-P Image**

IHC-P analysis of human liver tissue using GTX84364 HIBCH antibody [3H5].

Antigen retrieval : Heat-induced epitope retrieval by 10mM citrate buffer, pH6.0, 100°C for 10min.

Dilution : 1:50

**GTX84364 IHC-P Image**

IHC-P analysis of human kidney tissue using GTX84364 HIBCH antibody [3H5].

Antigen retrieval : Heat-induced epitope retrieval by 10mM citrate buffer, pH6.0, 100°C for 10min.

Dilution : 1:50



For full product information, images and publications, please visit our [website](#).