

Hex antibody [3E6]

Cat. No. GTX84374

Host	Mouse
Clonality	Monoclonal
Isotype	IgG2b
Application	WB, ICC/IF
Reactivity	Human

Package
100 µl

APPLICATION

Application Note

*Optimal dilutions/concentrations should be determined by the researcher.

Suggested dilution	Recommended dilution
WB	1:1000
ICC/IF	Assay dependent

Not tested in other applications.

Calculated MW 30 kDa. ([Note](#))

PROPERTIES

Form	Liquid
Buffer	PBS, 1% BSA, 50% Glycerol
Preservative	0.02% Sodium azide
Storage	Store as concentrated solution. Centrifuge briefly prior to opening vial. For short-term storage (1-2 weeks), store at 4°C. For long-term storage, aliquot and store at -20°C or below. Avoid multiple freeze-thaw cycles.
Concentration	1 mg/ml (Please refer to the vial label for the specific concentration.)
Immunogen	Recombinant fragment expressed in E.coli corresponding to amino acids 100-270 of human Hex
Purification	Purified by affinity chromatography From tissue culture supernatant
Conjugation	Unconjugated

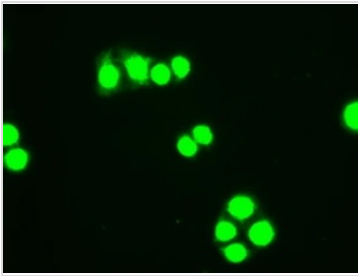
Note

For laboratory research use only. Not for any clinical, therapeutic, or diagnostic use in humans or animals. Not for animal or human consumption.

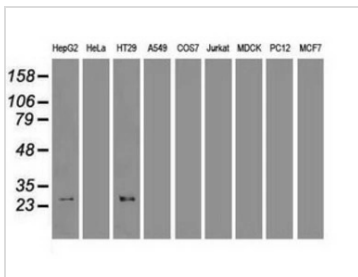
Purchasers shall not, and agree not to enable third parties to, analyze, copy, reverse engineer or otherwise attempt to determine the structure or sequence of the product.



For full product information, images and publications, please visit our [website](#).

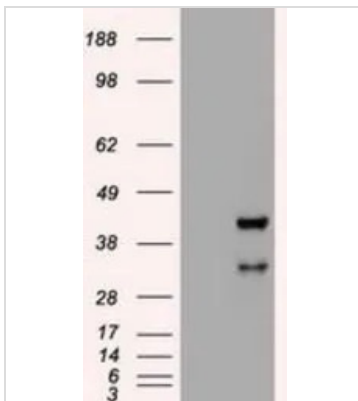
DATA IMAGES

GTX84374 ICC/IF Image

ICC/IF analysis of HT29 cells using GTX84374 Hex antibody [3E6].


GTX84374 WB Image

WB analysis of various cell lines using GTX84374 Hex antibody [3E6].

Loading : 35 ug per lane


GTX84374 WB Image

WB analysis of HEK293T cells transfected with Hex plasmid (Right) or empty vector (Left) for 48 hrs using GTX84374 Hex antibody [3E6].

Loading : 5 ug per lane



For full product information, images and publications, please visit our [website](https://www.genetex.com).