

## H6PD antibody [1H6]

Cat. No. GTX84394

Host	Mouse
Clonality	Monoclonal
Isotype	IgG1
Applications	WB, ICC/IF, IHC-P, FCM
Reactivity	Human

Package  
100 µl

## Applications

## Application Note

\*Optimal dilutions/concentrations should be determined by the researcher.

Suggested dilution	Recommended dilution
WB	1:1000
ICC/IF	1:100
IHC-P	1:50
FCM	1:100

Not tested in other applications.

Calculated MW 89 kDa. ( [Note](#) )

## Properties

Form	Liquid
Buffer	PBS, 1% BSA, 50% Glycerol
Preservative	0.02% Sodium azide
Storage	Store as concentrated solution. Centrifuge briefly prior to opening vial. For short-term storage (1-2 weeks), store at 4°C. For long-term storage, aliquot and store at -20°C or below. Avoid multiple freeze-thaw cycles.
Concentration	0.66 mg/ml (Please refer to the vial label for the specific concentration.)
Immunogen	Full length human recombinant protein of human H6PD (NP_004276) produced in HEK293T cell.
Purification	Purified by affinity chromatography
Conjugation	Unconjugated

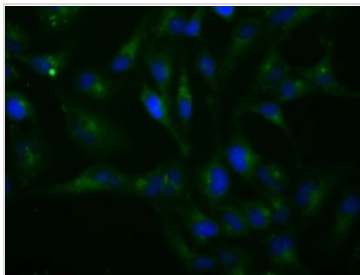
## Note

For laboratory research use only. Not for any clinical, therapeutic, or diagnostic use in humans or animals. Not for animal or human consumption.

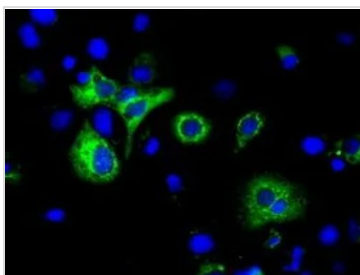
Purchasers shall not, and agree not to enable third parties to, analyze, copy, reverse engineer or otherwise attempt to determine the structure or sequence of the product.



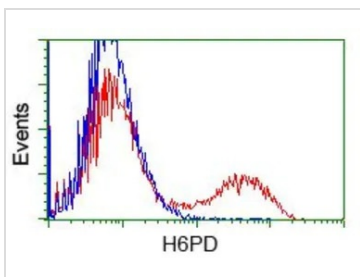
For full product information, images and publications, please visit our [website](#).

**DATA IMAGES**

**GTX84394 ICC/IF Image**

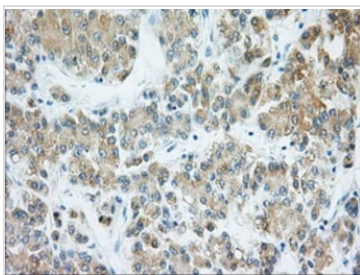
ICC/IF analysis of HeLa cells using GTX84394 H6PD antibody [1H6].


**GTX84394 ICC/IF Image**

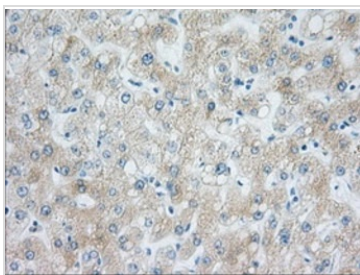
ICC/IF analysis of COS7 cells transiently transfected with H6PD plasmid using GTX84394 H6PD antibody [1H6].


**GTX84394 FCM Image**

FACS analysis of HEK293T cells transfected with either H6PD plasmid(Red) or empty vector control plasmid(Blue) using GTX84394 H6PD antibody [1H6].


**GTX84394 IHC-P Image**

IHC-P analysis of human liver carcinoma tissue using GTX84394 H6PD antibody [1H6].  
Antigen retrieval : Heat-induced epitope retrieval by 10mM citrate buffer, pH6.0, 100°C for 10min.  
Dilution : 1:50


**GTX84394 IHC-P Image**

IHC-P analysis of human liver tissue using GTX84394 H6PD antibody [1H6].  
Antigen retrieval : Heat-induced epitope retrieval by 10mM citrate buffer, pH6.0, 100°C for 10min.  
Dilution : 1:50



For full product information, images and publications, please visit our [website](https://www.genetex.com).