

GSS antibody [1A12]

Cat. No. GTX84406

Host	Mouse
Clonality	Monoclonal
Isotype	IgG1
Applications	WB, IHC-P
Reactivity	Human

Package
100 µl

Applications

Application Note

*Optimal dilutions/concentrations should be determined by the researcher.

Suggested dilution	Recommended dilution
WB	1:500-1:2000
IHC-P	1:50-1:150

Not tested in other applications.

Calculated MW 52 kDa. ([Note](#))

Properties

Form	Liquid
Buffer	PBS, 1% BSA, 50% Glycerol
Preservative	0.02% Sodium azide
Storage	Store as concentrated solution. Centrifuge briefly prior to opening vial. For short-term storage (1-2 weeks), store at 4°C. For long-term storage, aliquot and store at -20°C or below. Avoid multiple freeze-thaw cycles.
Concentration	0.58 mg/ml (Please refer to the vial label for the specific concentration.)
Immunogen	Full length human recombinant protein of human GSS (NP_000169) produced in HEK293T cell.
Purification	Purified by affinity chromatography
Conjugation	Unconjugated

Note

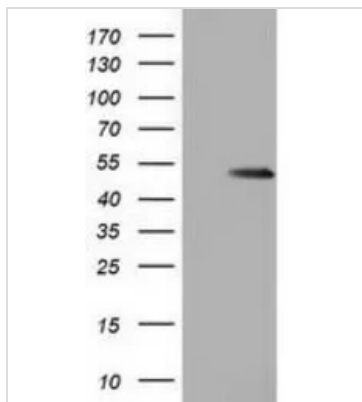
For laboratory research use only. Not for any clinical, therapeutic, or diagnostic use in humans or animals. Not for animal or human consumption.

Purchasers shall not, and agree not to enable third parties to, analyze, copy, reverse engineer or otherwise attempt to determine the structure or sequence of the product.



For full product information, images and publications, please visit our [website](#).

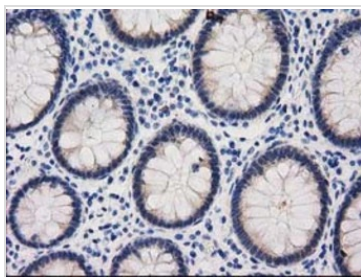
DATA IMAGES



GTx84406 WB Image

WB analysis of HEK293T cells transfected with GSS plasmid (Right) or empty vector (Left) for 48 hrs using GTx84406 GSS antibody [1A12].

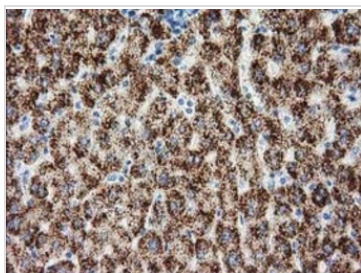
Loading : 5 ug per lane



GTx84406 IHC-P Image

IHC-P analysis of human colon tissue using GTx84406 GSS antibody [1A12].

Dilution : 1:150



GTx84406 IHC-P Image

IHC-P analysis of human liver tissue using GTx84406 GSS antibody [1A12].

Dilution : 1:150



For full product information, images and publications, please visit our [website](#).