

GRHPR antibody [4B6]

Cat. No. GTX84415

| | |
|-------------|-----------------|
| Host | Mouse |
| Clonality | Monoclonal |
| Isotype | IgG2a |
| Application | WB, IHC-P, FACS |
| Reactivity | Human |

Package
100 µl

APPLICATION

Application Note

*Optimal dilutions/concentrations should be determined by the researcher.

| Suggested dilution | Recommended dilution |
|--------------------|----------------------|
| WB | 1:2000 |
| IHC-P | 1:50-1:150 |
| FACS | 1:100 |

Not tested in other applications.

Calculated MW 36 kDa. ([Note](#))

PROPERTIES

| | |
|---------------|--|
| Form | Liquid |
| Buffer | PBS, 1% BSA, 50% Glycerol |
| Preservative | 0.02% Sodium azide |
| Storage | Store as concentrated solution. Centrifuge briefly prior to opening vial. For short-term storage (1-2 weeks), store at 4°C. For long-term storage, aliquot and store at -20°C or below. Avoid multiple freeze-thaw cycles. |
| Concentration | 0.84 mg/ml (Please refer to the vial label for the specific concentration.) |
| Immunogen | Full length human recombinant protein of human GRHPR (NP_036335) produced in HEK293T cell. |
| Purification | Purified by affinity chromatography |
| Conjugation | Unconjugated |

Note

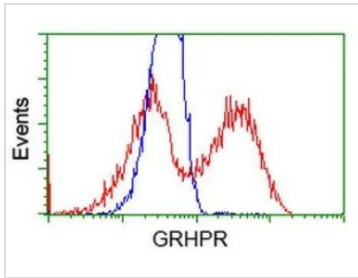
For laboratory research use only. Not for any clinical, therapeutic, or diagnostic use in humans or animals. Not for animal or human consumption.

Purchasers shall not, and agree not to enable third parties to, analyze, copy, reverse engineer or otherwise attempt to determine the structure or sequence of the product.



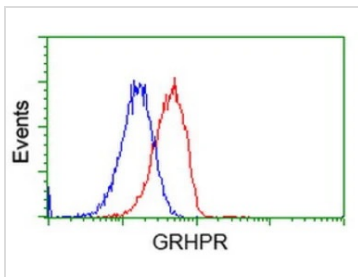
For full product information, images and publications, please visit our [website](#).

DATA IMAGES



GTX84415 FACS Image

FACS analysis of HEK293T cells transfected with either GRHPR plasmid(Red) or empty vector control plasmid(Blue) using GTX84415 GRHPR antibody [4B6].

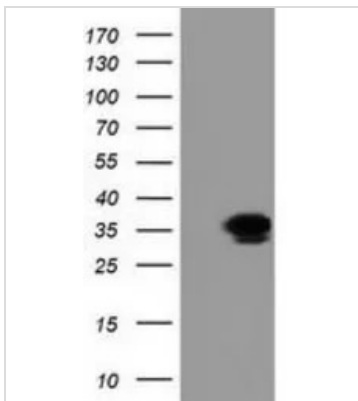


GTX84415 FACS Image

FACS analysis of HeLa cells using GTX84415 GRHPR antibody [4B6].

Red : Primary antibody

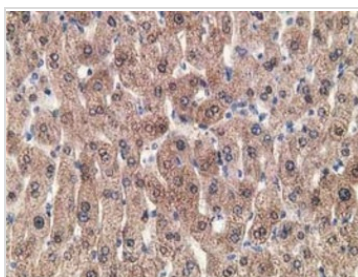
Blue : Negative control antibody



GTX84415 WB Image

WB analysis of HEK293T cells transfected with GRHPR plasmid (Right) or empty vector (Left) for 48 hrs using GTX84415 GRHPR antibody [4B6].

Loading : 5 ug per lane



GTX84415 IHC-P Image

IHC-P analysis of human liver tissue using GTX84415 GRHPR antibody [4B6].

Dilution : 1:150



For full product information, images and publications, please visit our [website](https://www.genetex.com).