

GPI antibody [5A11]

Cat. No. GTX84416

| | |
|---------------------|------------------------|
| Host | Mouse |
| Clonality | Monoclonal |
| Isotype | IgG2b |
| Applications | WB, ICC/IF, IHC-P, FCM |
| Reactivity | Human, Dog, Monkey |

Package
100 µl

Applications

Application Note

*Optimal dilutions/concentrations should be determined by the researcher.

| Suggested dilution | Recommended dilution |
|--------------------|----------------------|
| WB | 1:1000 |
| ICC/IF | 1:100 |
| IHC-P | 1:50 |
| FCM | 1:100 |

Not tested in other applications.

Calculated MW 63 kDa. ([Note](#))

Properties

| | |
|----------------------|--|
| Form | Liquid |
| Buffer | PBS, 1% BSA, 50% Glycerol |
| Preservative | 0.02% Sodium azide |
| Storage | Store as concentrated solution. Centrifuge briefly prior to opening vial. For short-term storage (1-2 weeks), store at 4°C. For long-term storage, aliquot and store at -20°C or below. Avoid multiple freeze-thaw cycles. |
| Concentration | 0.72 mg/ml (Please refer to the vial label for the specific concentration.) |
| Immunogen | Full length human recombinant protein of human GPI(NP_000166) produced in HEK293T cell. |
| Purification | Purified by affinity chromatography |
| Conjugation | Unconjugated |

Note

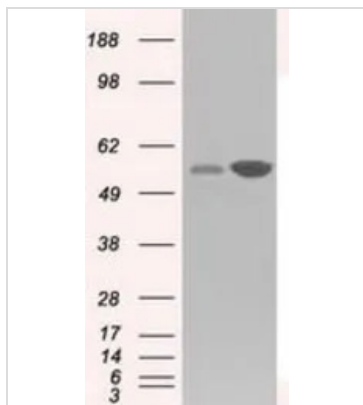
For laboratory research use only. Not for any clinical, therapeutic, or diagnostic use in humans or animals. Not for animal or human consumption.

Purchasers shall not, and agree not to enable third parties to, analyze, copy, reverse engineer or otherwise attempt to determine the structure or sequence of the product.



For full product information, images and publications, please visit our [website](#).

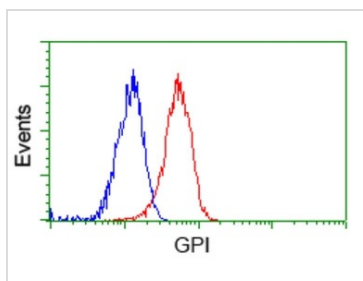
DATA IMAGES



GTX84416 WB Image

WB analysis of HEK293T cells transfected with GPI plasmid (Right) or empty vector (Left) for 48 hrs using GTX84416 GPI antibody [5A11].

Loading : 5 ug per lane

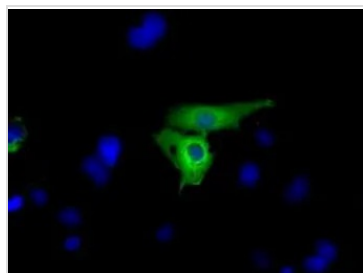


GTX84416 FCM Image

FACS analysis of Jurkat cells using GTX84416 GPI antibody [5A11].

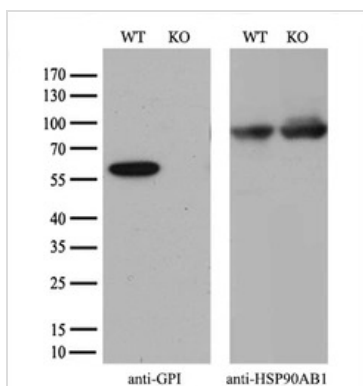
Red : Primary antibody

Blue : Negative control antibody



GTX84416 ICC/IF Image

ICC/IF analysis of COS7 cells transiently transfected with GPI plasmid using GTX84416 GPI antibody [5A11].



GTX84416 WB Image

WB analysis of wild type and GPI knock out 293T cell lysate(10µg per lane) using GTX84416 GPI antibody [5A11].

Dilution : 1:500



For full product information, images and publications, please visit our [website](#).