

## GRASP65 antibody [5C5]

**Cat. No. GTX84423**

<b>Host</b>	Mouse
<b>Clonality</b>	Monoclonal
<b>Isotype</b>	IgG2a
<b>Applications</b>	WB, ICC/IF, IHC-P, FCM
<b>Reactivity</b>	Human, Rat, Dog

**Package**  
100 µl

## Applications

**Application Note**

\*Optimal dilutions/concentrations should be determined by the researcher.

Suggested dilution	Recommended dilution
WB	1:200-1:500
ICC/IF	1:100
IHC-P	1:50
FCM	1:100

Not tested in other applications.

**Calculated MW** 46 kDa. ([Note](#))

## Properties

<b>Form</b>	Liquid
<b>Buffer</b>	PBS, 1% BSA, 50% Glycerol
<b>Preservative</b>	0.02% Sodium azide
<b>Storage</b>	Store as concentrated solution. Centrifuge briefly prior to opening vial. For short-term storage (1-2 weeks), store at 4°C. For long-term storage, aliquot and store at -20°C or below. Avoid multiple freeze-thaw cycles.
<b>Concentration</b>	0.96 mg/ml (Please refer to the vial label for the specific concentration.)
<b>Immunogen</b>	Full length human recombinant protein of human GORASP1 (NP_114105) produced in HEK293T cell.
<b>Purification</b>	Purified by affinity chromatography
<b>Conjugation</b>	Unconjugated

**Note**

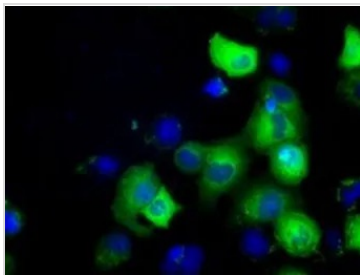
For laboratory research use only. Not for any clinical, therapeutic, or diagnostic use in humans or animals. Not for animal or human consumption.

Purchasers shall not, and agree not to enable third parties to, analyze, copy, reverse engineer or otherwise attempt to determine the structure or sequence of the product.

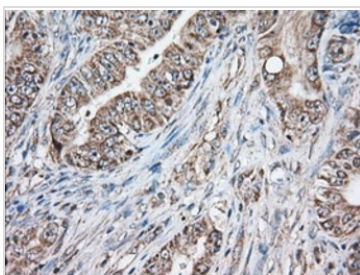


For full product information, images and publications, please visit our [website](#).

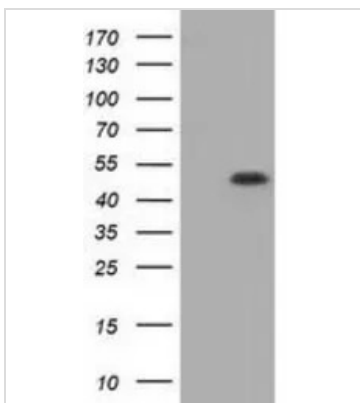
## DATA IMAGES

**GTX84423 ICC/IF Image**

ICC/IF analysis of COS7 cells transiently transfected with GRASP65 plasmid using GTX84423 GRASP65 antibody [5C5].

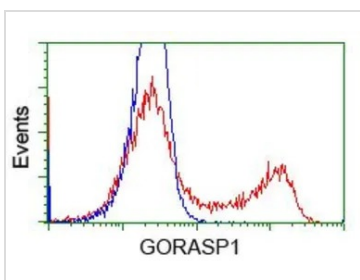
**GTX84423 IHC-P Image**

IHC-P analysis of human colon adenocarcinoma tissue using GTX84423 GRASP65 antibody [5C5].  
Antigen retrieval : Heat-induced epitope retrieval by 10mM citrate buffer, pH6.0, 100°C for 10min.  
Dilution : 1:50

**GTX84423 WB Image**

WB analysis of HEK293T cells transfected with GRASP65 plasmid (Right) or empty vector (Left) for 48 hrs using GTX84423 GRASP65 antibody [5C5].

Loading : 5 ug per lane

**GTX84423 FCM Image**

FACS analysis of HEK293T cells transfected with either GRASP65 plasmid(Red) or empty vector control plasmid(Blue) using GTX84423 GRASP65 antibody [5C5].



For full product information, images and publications, please visit our [website](#).