

# Glutamine synthetase antibody [1F4]

**Cat. No. GTX84426**

|                     |                        |
|---------------------|------------------------|
| <b>Host</b>         | Mouse                  |
| <b>Clonality</b>    | Monoclonal             |
| <b>Isotype</b>      | IgG2a                  |
| <b>Applications</b> | WB, ICC/IF, IHC-P, FCM |
| <b>Reactivity</b>   | Human                  |

References ( 1 )

Package

100 µl

## Applications

### Application Note

\*Optimal dilutions/concentrations should be determined by the researcher.

| Suggested dilution | Recommended dilution |
|--------------------|----------------------|
| WB                 | 1:1000               |
| ICC/IF             | 1:50-1:100           |
| IHC-P              | 1:50                 |
| FCM                | 1:100                |

Not tested in other applications.

**Calculated MW** 42 kDa. ( [Note](#) )

## Properties

|                      |  |
|----------------------|--|
| <b>Form</b>          | Liquid   |
| <b>Buffer</b>        | PBS, 1% BSA, 50% Glycerol  |
| <b>Preservative</b>  | 0.02% Sodium azide   |
| <b>Storage</b>       | Store as concentrated solution. Centrifuge briefly prior to opening vial. For short-term storage (1-2 weeks), store at 4°C. For long-term storage, aliquot and store at -20°C or below. Avoid multiple freeze-thaw cycles. |
| <b>Concentration</b> | 1 mg/ml (Please refer to the vial label for the specific concentration.)   |
| <b>Immunogen</b>     | Full length human recombinant protein of human GLUL (NP_002056) produced in HEK293T cell.  |
| <b>Purification</b>  | Purified by affinity chromatography<br>From tissue culture supernatant   |
| <b>Conjugation</b>   | Unconjugated   |



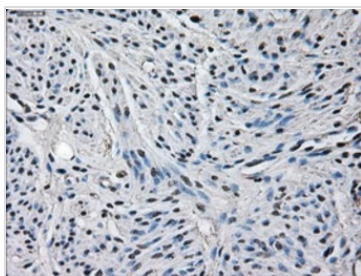
For full product information, images and publications, please visit our [website](#).

For laboratory research use only. Not for any clinical, therapeutic, or diagnostic use in humans or animals. Not for animal or human consumption.

## Note

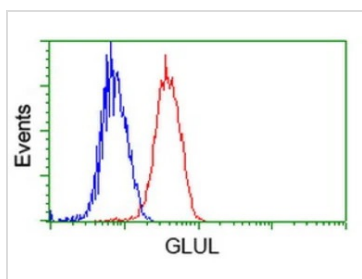
Purchasers shall not, and agree not to enable third parties to, analyze, copy, reverse engineer or otherwise attempt to determine the structure or sequence of the product.

## DATA IMAGES



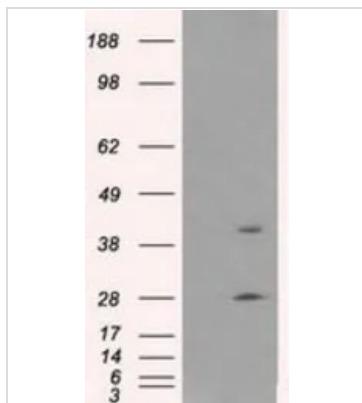
### GTX84426 IHC-P Image

IHC-P analysis of human endometrium tissue using GTX84426 Glutamine synthetase antibody [1F4].  
Antigen retrieval : Heat-induced epitope retrieval by 10mM citrate buffer, pH6.0, 100°C for 10min.



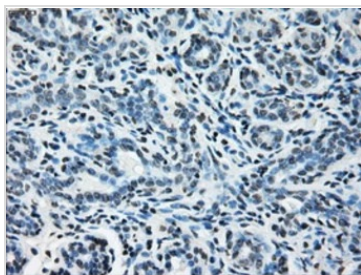
### GTX84426 FCM Image

FACS analysis of Jurkat cells using GTX84426 Glutamine synthetase antibody [1F4].  
Red : Primary antibody  
Blue : Negative control antibody



### GTX84426 WB Image

WB analysis of HEK293T cells transfected with Glutamine synthetase plasmid (Right) or empty vector (Left) for 48 hrs using GTX84426 Glutamine synthetase antibody [1F4].  
Loading : 5 ug per lane



### GTX84426 IHC-P Image

IHC-P analysis of human breast tissue using GTX84426 Glutamine synthetase antibody [1F4].  
Antigen retrieval : Heat-induced epitope retrieval by 10mM citrate buffer, pH6.0, 100°C for 10min.



For full product information, images and publications, please visit our [website](https://www.genetex.com).