

GBE1 antibody [1D11]

Cat. No. GTX84452

Host	Mouse
Clonality	Monoclonal
Isotype	IgG1
Applications	WB, ICC/IF, FCM, IP
Reactivity	Human, Mouse

Package
100 µl

Applications

Application Note

*Optimal dilutions/concentrations should be determined by the researcher.

Suggested dilution	Recommended dilution
WB	1:2000
ICC/IF	1:50-1:100
FCM	1:100
IP	2ug/500ul

Not tested in other applications.

Calculated MW 80 kDa. ([Note](#))

Properties

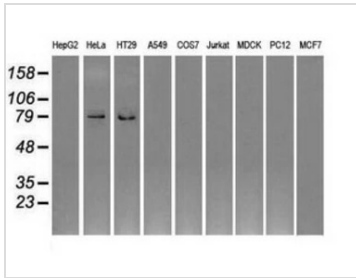
Form	Liquid
Buffer	PBS, 1% BSA, 50% Glycerol
Preservative	0.02% Sodium azide
Storage	Store as concentrated solution. Centrifuge briefly prior to opening vial. For short-term storage (1-2 weeks), store at 4°C. For long-term storage, aliquot and store at -20°C or below. Avoid multiple freeze-thaw cycles.
Concentration	1.1 mg/ml (Please refer to the vial label for the specific concentration.)
Immunogen	Full length human recombinant protein of human GBE1 (NP_000149) produced in HEK293T cell.
Purification	Purified by affinity chromatography
Conjugation	Unconjugated

Note

For laboratory research use only. Not for any clinical, therapeutic, or diagnostic use in humans or animals. Not for animal or human consumption.

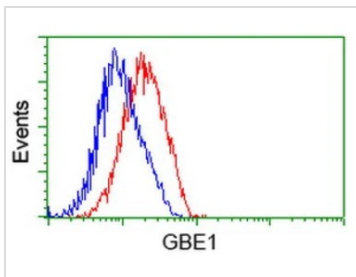
Purchasers shall not, and agree not to enable third parties to, analyze, copy, reverse engineer or otherwise attempt to determine the structure or sequence of the product.

For full product information, images and publications, please visit our [website](#).

DATA IMAGES

GTX84452 WB Image

WB analysis of various cell lines using GTX84452 GBE1 antibody [1D11].

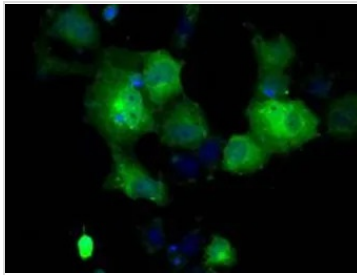
Loading : 35 ug per lane


GTX84452 FCM Image

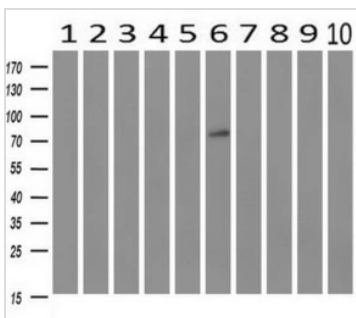
FACS analysis of Jurkat cells using GTX84452 GBE1 antibody [1D11].

Red : Primary antibody

Blue : Negative control antibody


GTX84452 ICC/IF Image

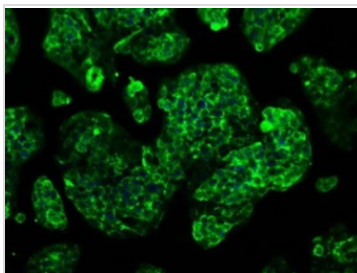
ICC/IF analysis of COS7 cells transiently transfected with GBE1 plasmid using GTX84452 GBE1 antibody [1D11].


GTX84452 WB Image

WB analysis of human tissues (Lane 1-Testis ; Lane 2-Omentum ; Lane 3-Uterus ; Lane 4-Breast ; Lane 5-Brain ; Lane 6-Liver ; Lane 7-Ovary ; Lane 8-Thyroid gland ; Lane 9-colon ; Lane 10-spleen) using GTX84452 GBE1 antibody [1D11].

Loading : 10 ug per lane

Dilution : 1:500


GTX84452 ICC/IF Image

ICC/IF analysis of HepG2 cells using GTX84452 GBE1 antibody [1D11].



For full product information, images and publications, please visit our [website](http://www.genetex.com).