

GBE1 antibody [3B4]

Cat. No. GTX84456

Host	Mouse
Clonality	Monoclonal
Isotype	IgG2a
Application	WB, IHC-P, IP
Reactivity	Human, Mouse, Dog, Monkey

Package
100 µl

APPLICATION

Application Note

*Optimal dilutions/concentrations should be determined by the researcher.

Suggested dilution	Recommended dilution
WB	1:2000
IHC-P	1:50
IP	2ug/500ul

Not tested in other applications.

Calculated MW 80 kDa. ([Note](#))

PROPERTIES

Form	Liquid
Buffer	PBS, 1% BSA, 50% Glycerol
Preservative	0.02% Sodium azide
Storage	Store as concentrated solution. Centrifuge briefly prior to opening vial. For short-term storage (1-2 weeks), store at 4°C. For long-term storage, aliquot and store at -20°C or below. Avoid multiple freeze-thaw cycles.
Concentration	1 mg/ml (Please refer to the vial label for the specific concentration.)
Immunogen	Full length human recombinant protein of human GBE1 (NP_000149) produced in HEK293T cell.
Purification	Purified by affinity chromatography
Conjugation	Unconjugated

Note

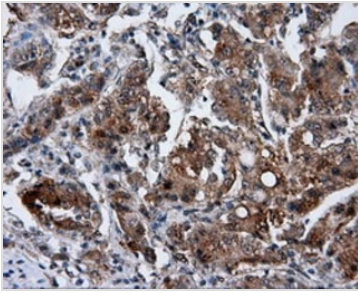
For laboratory research use only. Not for any clinical, therapeutic, or diagnostic use in humans or animals. Not for animal or human consumption.

Purchasers shall not, and agree not to enable third parties to, analyze, copy, reverse engineer or otherwise attempt to determine the structure or sequence of the product.



For full product information, images and publications, please visit our [website](#).

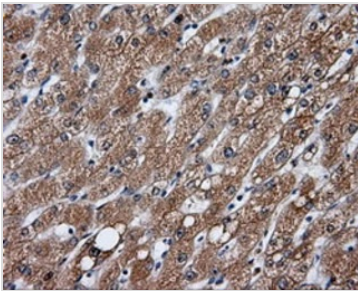
DATA IMAGES



GTX84456 IHC-P Image

IHC-P analysis of human liver carcinoma tissue using GTX84456 GBE1 antibody [3B4].

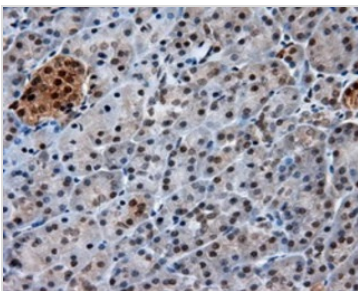
Antigen retrieval : Heat-induced epitope retrieval by 10mM citrate buffer, pH6.0, 100°C for 10min.



GTX84456 IHC-P Image

IHC-P analysis of human liver tissue using GTX84456 GBE1 antibody [3B4].

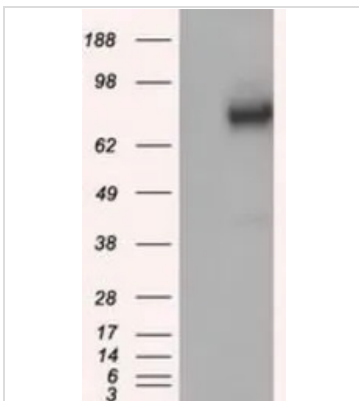
Antigen retrieval : Heat-induced epitope retrieval by 10mM citrate buffer, pH6.0, 100°C for 10min.



GTX84456 IHC-P Image

IHC-P analysis of human pancreas tissue using GTX84456 GBE1 antibody [3B4].

Antigen retrieval : Heat-induced epitope retrieval by 10mM citrate buffer, pH6.0, 100°C for 10min.



GTX84456 WB Image

WB analysis of HEK293T cells transfected with GBE1 plasmid (Right) or empty vector (Left) for 48 hrs using GTX84456 GBE1 antibody [3B4].

Loading : 5 ug per lane



For full product information, images and publications, please visit our [website](https://www.genetex.com).