

FGF1 antibody [4D2]

Cat. No. GTX84503

Host	Mouse
Clonality	Monoclonal
Isotype	IgG1
Applications	WB, ICC/IF
Reactivity	Human

Package
100 µl

Applications

Application Note

*Optimal dilutions/concentrations should be determined by the researcher.

Suggested dilution	Recommended dilution
WB	1:5000-1:50000
ICC/IF	1:100

Not tested in other applications.

Calculated MW 17 kDa. ([Note](#))

Properties

Form	Liquid
Buffer	PBS, 1% BSA, 50% Glycerol
Preservative	0.02% Sodium azide
Storage	Store as concentrated solution. Centrifuge briefly prior to opening vial. For short-term storage (1-2 weeks), store at 4°C. For long-term storage, aliquot and store at -20°C or below. Avoid multiple freeze-thaw cycles.
Concentration	1 mg/ml (Please refer to the vial label for the specific concentration.)
Immunogen	Human recombinant protein fragment corresponding to amino acids 16-155 of human AFGF (NP_000791) produced in E.coli.
Purification	Purified by affinity chromatography From tissue culture supernatant
Conjugation	Unconjugated

Note

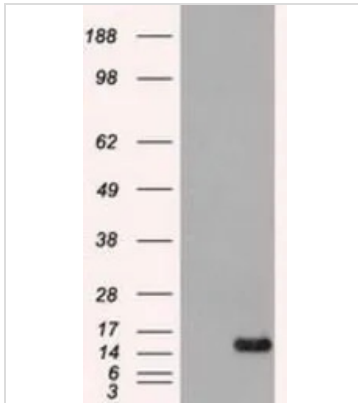
For laboratory research use only. Not for any clinical, therapeutic, or diagnostic use in humans or animals. Not for animal or human consumption.

Purchasers shall not, and agree not to enable third parties to, analyze, copy, reverse engineer or otherwise attempt to determine the structure or sequence of the product.



For full product information, images and publications, please visit our [website](#).

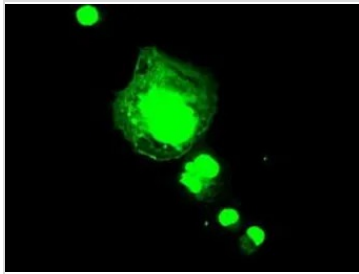
DATA IMAGES



GTX84503 WB Image

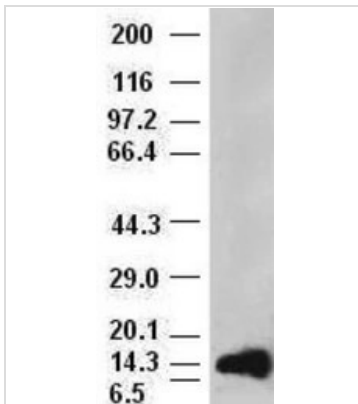
WB analysis of HEK293T cells transfected with FGF1 plasmid (Right) or empty vector (Left) for 48 hrs using GTX84503 FGF1 antibody [4D2].

Loading : 5 ug per lane



GTX84503 ICC/IF Image

ICC/IF analysis of COS7 cells transiently transfected with FGF1 plasmid using GTX84503 FGF1 antibody [4D2].



GTX84503 WB Image

WB analysis of recombinant human aFGF using GTX84503 FGF1 antibody [4D2].

Dilution : 1:50000



For full product information, images and publications, please visit our [website](https://www.genetex.com).