

# Mig-2 antibody [25A4]

**Cat. No. GTX84505**

<b>Host</b>	Mouse
<b>Clonality</b>	Monoclonal
<b>Isotype</b>	IgG2a
<b>Applications</b>	WB, ICC/IF, IHC-P, IP
<b>Reactivity</b>	Human, Monkey

**Package**  
100 µl

## Applications

### Application Note

\*Optimal dilutions/concentrations should be determined by the researcher.

Suggested dilution	Recommended dilution
WB	1:1000-1:2000
ICC/IF	1:100
IHC-P	1:150
IP	2ug/500ul

Not tested in other applications.

**Calculated MW** 78 kDa. ( [Note](#) )

## Properties

<b>Form</b>	Liquid
<b>Buffer</b>	PBS, 1% BSA, 50% Glycerol
<b>Preservative</b>	0.02% Sodium azide
<b>Storage</b>	Store as concentrated solution. Centrifuge briefly prior to opening vial. For short-term storage (1-2 weeks), store at 4°C. For long-term storage, aliquot and store at -20°C or below. Avoid multiple freeze-thaw cycles.
<b>Concentration</b>	1 mg/ml (Please refer to the vial label for the specific concentration.)
<b>Immunogen</b>	Full-length protein expressed in 293T cell transfected with human FERMT2 expression vector
<b>Purification</b>	Purified by affinity chromatography
<b>Conjugation</b>	Unconjugated

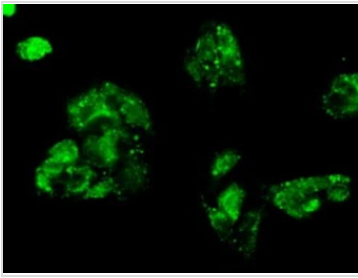
### Note

For laboratory research use only. Not for any clinical, therapeutic, or diagnostic use in humans or animals. Not for animal or human consumption.

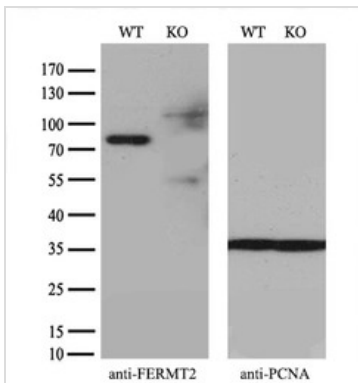
Purchasers shall not, and agree not to enable third parties to, analyze, copy, reverse engineer or otherwise attempt to determine the structure or sequence of the product.



For full product information, images and publications, please visit our [website](#).

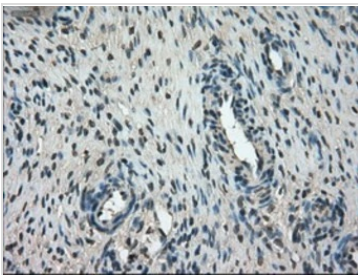
**DATA IMAGES**

**GTx84505 ICC/IF Image**

ICC/IF analysis of HepG2 cells using GTx84505 Mig-2 antibody [25A4].


**GTx84505 WB Image**

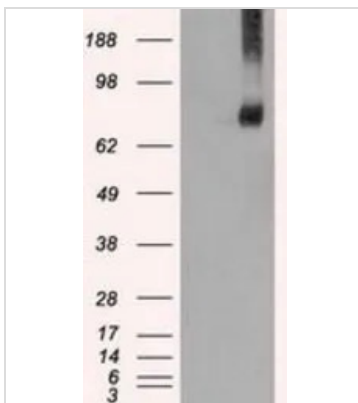
WB analysis of wild type and Mig-2 knock out HeLa cell lysate(10µg per lane) using GTx84505 Mig-2 antibody [25A4].

Dilution : 1:500


**GTx84505 IHC-P Image**

IHC-P analysis of human ovary tissue using GTx84505 Mig-2 antibody [25A4].

Antigen retrieval : Heat-induced epitope retrieval by 10mM citrate buffer, pH6.0, 100°C for 10min.


**GTx84505 WB Image**

WB analysis of HEK293T cells transfected with Mig-2 plasmid (Right) or empty vector (Left) for 48 hrs using GTx84505 Mig-2 antibody [25A4].

Loading : 5 ug per lane



For full product information, images and publications, please visit our [website](https://www.genetex.com).