

## Mig-2 antibody [14A11]

**Cat. No. GTX84506**

<b>Host</b>	Mouse
<b>Clonality</b>	Monoclonal
<b>Isotype</b>	IgG2a
<b>Applications</b>	WB, ICC/IF, IHC-P, IP
<b>Reactivity</b>	Human, Mouse, Rat, Dog, Monkey

**Package**  
100 µl

## Applications

**Application Note**

\*Optimal dilutions/concentrations should be determined by the researcher.

Suggested dilution	Recommended dilution
WB	1:2000
ICC/IF	1:50-1:100
IHC-P	1:50
IP	2ug/500ul

Not tested in other applications.

**Calculated MW** 78 kDa. ([Note](#))

## Properties

<b>Form</b>	Liquid
<b>Buffer</b>	PBS, 1% BSA, 50% Glycerol
<b>Preservative</b>	0.02% Sodium azide
<b>Storage</b>	Store as concentrated solution. Centrifuge briefly prior to opening vial. For short-term storage (1-2 weeks), store at 4°C. For long-term storage, aliquot and store at -20°C or below. Avoid multiple freeze-thaw cycles.
<b>Concentration</b>	1 mg/ml (Please refer to the vial label for the specific concentration.)
<b>Immunogen</b>	Full-length protein expressed in 293T cell transfected with human FERMT2 expression vector
<b>Purification</b>	Purified by affinity chromatography
<b>Conjugation</b>	Unconjugated

**Note**

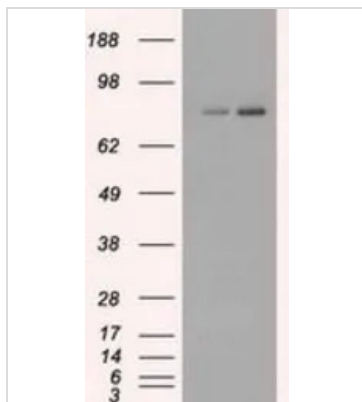
For laboratory research use only. Not for any clinical, therapeutic, or diagnostic use in humans or animals. Not for animal or human consumption.

Purchasers shall not, and agree not to enable third parties to, analyze, copy, reverse engineer or otherwise attempt to determine the structure or sequence of the product.



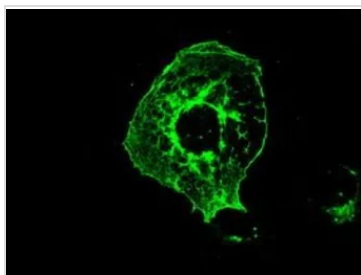
For full product information, images and publications, please visit our [website](#).

## DATA IMAGES

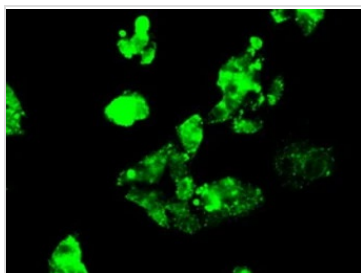
**GTX84506 WB Image**

WB analysis of HEK293T cells transfected with Mig-2 plasmid (Right) or empty vector (Left) for 48 hrs using GTX84506 Mig-2 antibody [14A11].

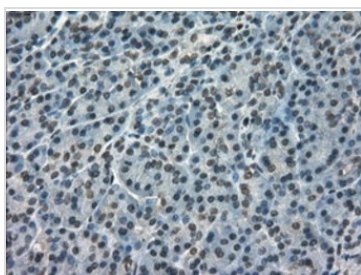
Loading : 5 ug per lane

**GTX84506 ICC/IF Image**

ICC/IF analysis of COS7 cells transiently transfected with Mig-2 plasmid using GTX84506 Mig-2 antibody [14A11].

**GTX84506 ICC/IF Image**

ICC/IF analysis of HepG2 cells using GTX84506 Mig-2 antibody [14A11].

**GTX84506 IHC-P Image**

IHC-P analysis of human pancreas tissue using GTX84506 Mig-2 antibody [14A11].

Antigen retrieval : Heat-induced epitope retrieval by 10mM citrate buffer, pH6.0, 100°C for 10min.



For full product information, images and publications, please visit our [website](#).