

CD32a antibody [20D1]

Cat. No. GTX84508

Host	Mouse
Clonality	Monoclonal
Isotype	IgG1
Applications	WB, IHC-P, IP
Reactivity	Human, Monkey

Package
100 µl

Applications

Application Note

*Optimal dilutions/concentrations should be determined by the researcher.

Suggested dilution	Recommended dilution
WB	1:500
IHC-P	1:50
IP	2ug/500ul

Not tested in other applications.

Calculated MW 35 kDa. ([Note](#))

Properties

Form	Liquid
Buffer	PBS, 1% BSA, 50% Glycerol
Preservative	0.02% Sodium azide
Storage	Store as concentrated solution. Centrifuge briefly prior to opening vial. For short-term storage (1-2 weeks), store at 4°C. For long-term storage, aliquot and store at -20°C or below. Avoid multiple freeze-thaw cycles.
Concentration	1 mg/ml (Please refer to the vial label for the specific concentration.)
Immunogen	Full length human recombinant protein of human FCGR2A (NP_067674) produced in HEK293T cell.
Purification	Purified by affinity chromatography From tissue culture supernatant
Conjugation	Unconjugated

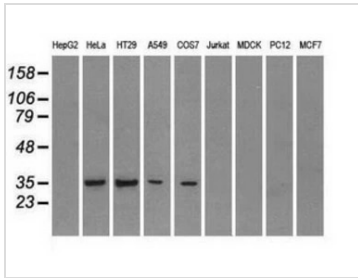
Note

For laboratory research use only. Not for any clinical, therapeutic, or diagnostic use in humans or animals. Not for animal or human consumption.

Purchasers shall not, and agree not to enable third parties to, analyze, copy, reverse engineer or otherwise attempt to determine the structure or sequence of the product.

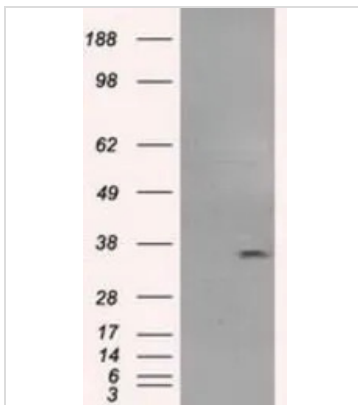


For full product information, images and publications, please visit our [website](#).

DATA IMAGES

GTX84508 WB Image

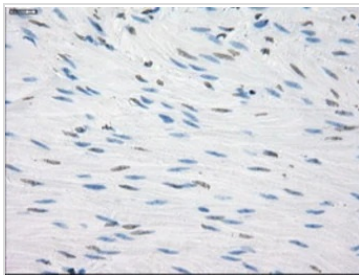
WB analysis of various cell lines using GTX84508 CD32a antibody [20D1].

Loading : 35 ug per lane


GTX84508 WB Image

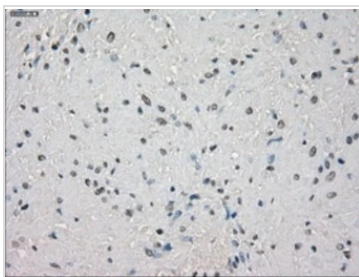
WB analysis of HEK293T cells transfected with CD32a plasmid (Right) or empty vector (Left) for 48 hrs using GTX84508 CD32a antibody [20D1].

Loading : 5 ug per lane


GTX84508 IHC-P Image

IHC-P analysis of human colon tissue using GTX84508 CD32a antibody [20D1].

Antigen retrieval : Heat-induced epitope retrieval by 10mM citrate buffer, pH6.0, 100°C for 10min.


GTX84508 IHC-P Image

IHC-P analysis of human prostate tissue using GTX84508 CD32a antibody [20D1].

Antigen retrieval : Heat-induced epitope retrieval by 10mM citrate buffer, pH6.0, 100°C for 10min.



For full product information, images and publications, please visit our [website](https://www.genetex.com).