

ERCC1 antibody [1B3]

Cat. No. GTX84546

| | |
|---------------------|------------------------|
| Host | Mouse |
| Clonality | Monoclonal |
| Isotype | IgG1 |
| Applications | WB, ICC/IF, IHC-P, FCM |
| Reactivity | Human |

Package
100 µl

Applications

Application Note

*Optimal dilutions/concentrations should be determined by the researcher.

| Suggested dilution | Recommended dilution |
|--------------------|----------------------|
| WB | 1:2000 |
| ICC/IF | 1:100 |
| IHC-P | 1:50 |
| FCM | 1:50-1:100 |

Not tested in other applications.

Calculated MW 33 kDa. ([Note](#))

Properties

| | |
|----------------------|----------------------------------------------------------------------------------------------------------------------------------------------------------------------------------------------------------------------------|
| Form | Liquid |
| Buffer | PBS, 1% BSA, 50% Glycerol |
| Preservative | 0.02% Sodium azide |
| Storage | Store as concentrated solution. Centrifuge briefly prior to opening vial. For short-term storage (1-2 weeks), store at 4°C. For long-term storage, aliquot and store at -20°C or below. Avoid multiple freeze-thaw cycles. |
| Concentration | 0.85 mg/ml (Please refer to the vial label for the specific concentration.) |
| Immunogen | Full length human recombinant protein of human ERCC1 (NP_001974) produced in HEK293T cell. |
| Purification | Purified by affinity chromatography |
| Conjugation | Unconjugated |

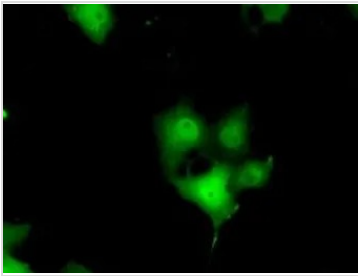
Note

For laboratory research use only. Not for any clinical, therapeutic, or diagnostic use in humans or animals. Not for animal or human consumption.

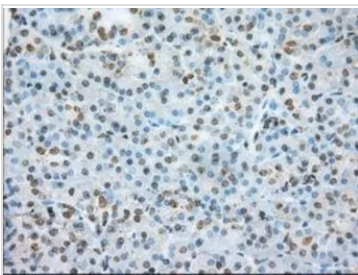
Purchasers shall not, and agree not to enable third parties to, analyze, copy, reverse engineer or otherwise attempt to determine the structure or sequence of the product.



For full product information, images and publications, please visit our [website](#).

DATA IMAGES

GTx84546 ICC/IF Image

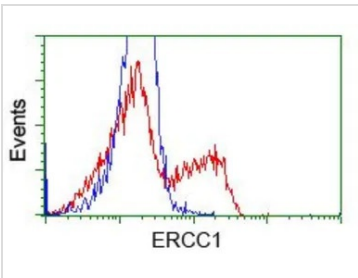
ICC/IF analysis of COS7 cells transiently transfected with ERCC1 plasmid using GTx84546 ERCC1 antibody [1B3].


GTx84546 IHC-P Image

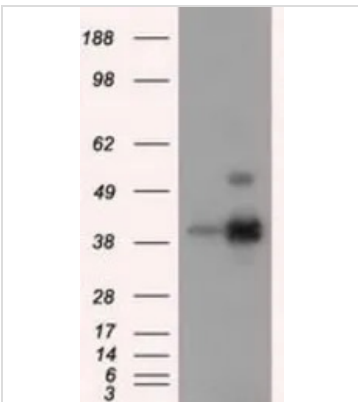
IHC-P analysis of pancreas tissue using GTx84546 ERCC1 antibody [1B3].

Antigen retrieval : Heat-induced epitope retrieval by 10mM citrate buffer, pH6.0, 100°C for 10min.

Dilution : 1:50


GTx84546 FCM Image

FACS analysis of HEK293T cells transfected with either ERCC1 plasmid(Red) or empty vector control plasmid(Blue) using GTx84546 ERCC1 antibody [1B3].


GTx84546 WB Image

WB analysis of HEK293T cells transfected with ERCC1 plasmid (Right) or empty vector (Left) for 48 hrs using GTx84546 ERCC1 antibody [1B3].

Loading : 5 ug per lane



For full product information, images and publications, please visit our [website](https://www.genetex.com).