

## ERCC1 antibody [2A7]

Cat. No. GTX84550

Host	Mouse
Clonality	Monoclonal
Isotype	IgG1
Applications	WB, ICC/IF, IHC-P, FCM
Reactivity	Human, Mouse

Package  
100 µl

## Applications

## Application Note

\*Optimal dilutions/concentrations should be determined by the researcher.

Suggested dilution	Recommended dilution
WB	1:2000
ICC/IF	1:100
IHC-P	1:50
FCM	1:100

Not tested in other applications.

Calculated MW 33 kDa. ( [Note](#) )

## Properties

Form	Liquid
Buffer	PBS, 1% BSA, 50% Glycerol
Preservative	0.02% Sodium azide
Storage	Store as concentrated solution. Centrifuge briefly prior to opening vial. For short-term storage (1-2 weeks), store at 4°C. For long-term storage, aliquot and store at -20°C or below. Avoid multiple freeze-thaw cycles.
Concentration	0.5 mg/ml (Please refer to the vial label for the specific concentration.)
Immunogen	Full length human recombinant protein of human ERCC1 (NP_001974) produced in HEK293T cell.
Purification	Purified by affinity chromatography
Conjugation	Unconjugated

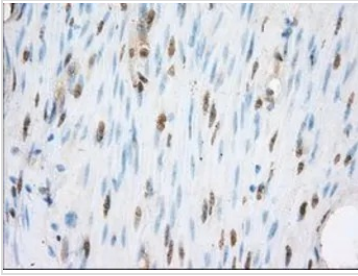
## Note

For laboratory research use only. Not for any clinical, therapeutic, or diagnostic use in humans or animals. Not for animal or human consumption.

Purchasers shall not, and agree not to enable third parties to, analyze, copy, reverse engineer or otherwise attempt to determine the structure or sequence of the product.

For full product information, images and publications, please visit our [website](#).

## DATA IMAGES

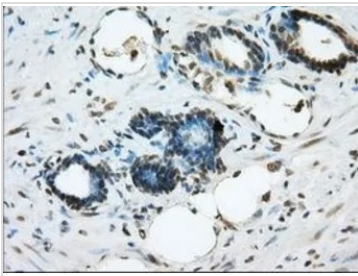


### GTx84550 IHC-P Image

IHC-P analysis of colon tissue using GTx84550 ERCC1 antibody [2A7].

Antigen retrieval : Heat-induced epitope retrieval by 10mM citrate buffer, pH6.0, 100°C for 10min.

Dilution : 1:50

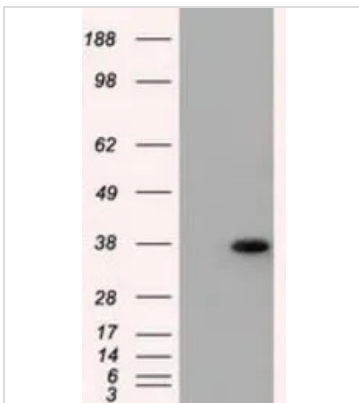


### GTx84550 IHC-P Image

IHC-P analysis of prostate carcinoma tissue using GTx84550 ERCC1 antibody [2A7].

Antigen retrieval : Heat-induced epitope retrieval by 10mM citrate buffer, pH6.0, 100°C for 10min.

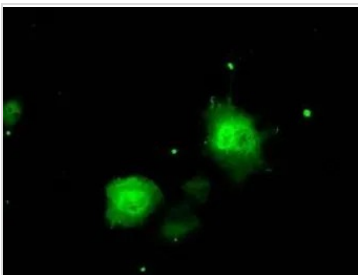
Dilution : 1:50



### GTx84550 WB Image

WB analysis of HEK293T cells transfected with ERCC1 plasmid (Right) or empty vector (Left) for 48 hrs using GTx84550 ERCC1 antibody [2A7].

Loading : 5 ug per lane



### GTx84550 ICC/IF Image

ICC/IF analysis of COS7 cells transiently transfected with ERCC1 plasmid using GTx84550 ERCC1 antibody [2A7].



For full product information, images and publications, please visit our [website](https://www.genetex.com).