

eIF2 alpha antibody [3H4]

Cat. No. GTX84579

Host	Mouse
Clonality	Monoclonal
Isotype	IgG1
Application	WB, ICC/IF, IHC-P, FACS
Reactivity	Human, Rat, Dog, Monkey

Package
100 µl

APPLICATION

Application Note

*Optimal dilutions/concentrations should be determined by the researcher.

Suggested dilution	Recommended dilution
WB	1:1000-1:2000
ICC/IF	1:100
IHC-P	1:50
FACS	1:100

Not tested in other applications.

Calculated MW 36 kDa. ([Note](#))

PROPERTIES

Form	Liquid
Buffer	PBS, 1% BSA, 50% Glycerol
Preservative	0.02% Sodium azide
Storage	Store as concentrated solution. Centrifuge briefly prior to opening vial. For short-term storage (1-2 weeks), store at 4°C. For long-term storage, aliquot and store at -20°C or below. Avoid multiple freeze-thaw cycles.
Concentration	0.69 mg/ml (Please refer to the vial label for the specific concentration.)
Immunogen	Full length human recombinant protein of human EIF2S1 (NP_004085) produced in HEK293T cell.
Purification	Purified by affinity chromatography
Conjugation	Unconjugated

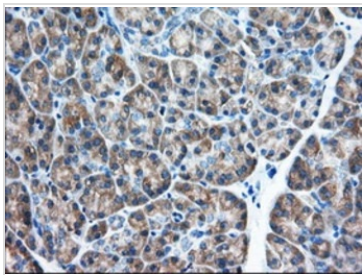
Note

For laboratory research use only. Not for any clinical, therapeutic, or diagnostic use in humans or animals. Not for animal or human consumption.

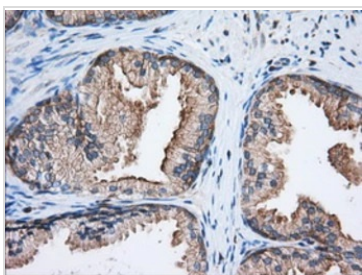
Purchasers shall not, and agree not to enable third parties to, analyze, copy, reverse engineer or otherwise attempt to determine the structure or sequence of the product.



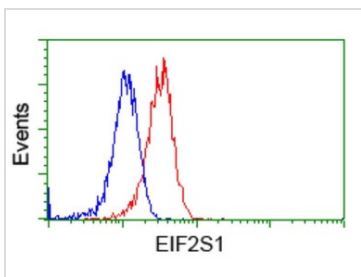
For full product information, images and publications, please visit our [website](#).

DATA IMAGES

GTX84579 IHC-P Image

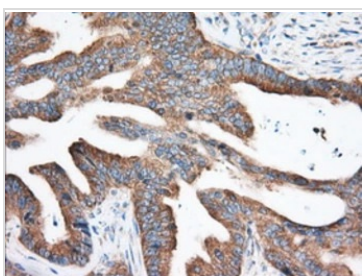
IHC-P analysis of human pancreas tissue using GTX84579 eIF2 alpha antibody [3H4].
 Antigen retrieval : Heat-induced epitope retrieval by 10mM citrate buffer, pH6.0, 100°C for 10min.
 Dilution : 1:50


GTX84579 IHC-P Image

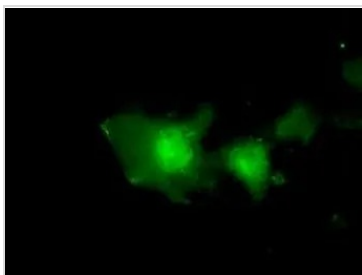
IHC-P analysis of human prostate tissue using GTX84579 eIF2 alpha antibody [3H4].
 Antigen retrieval : Heat-induced epitope retrieval by 10mM citrate buffer, pH6.0, 100°C for 10min.
 Dilution : 1:50


GTX84579 FACS Image

FACS analysis of Jurkat cells using GTX84579 eIF2 alpha antibody [3H4].
 Red : Primary antibody
 Blue : Negative control antibody


GTX84579 IHC-P Image

IHC-P analysis of human colon adenocarcinoma tissue using GTX84579 eIF2 alpha antibody [3H4].
 Antigen retrieval : Heat-induced epitope retrieval by 10mM citrate buffer, pH6.0, 100°C for 10min.
 Dilution : 1:50


GTX84579 ICC/IF Image

ICC/IF analysis of COS7 cells transiently transfected with eIF2 alpha plasmid using GTX84579 eIF2 alpha antibody [3H4].



For full product information, images and publications, please visit our [website](https://www.genetex.com).