

CD26 antibody [11D7]

Cat. No. GTX84602

Host	Mouse
Clonality	Monoclonal
Isotype	IgG1
Applications	WB, ICC/IF, IHC-P, FCM, ELISA
Reactivity	Human, Mouse

References (4)

Package

100 µl

Applications

Application Note

*Optimal dilutions/concentrations should be determined by the researcher.

Suggested dilution	Recommended dilution
WB	1:500
ICC/IF	1:100
IHC-P	1:50
FCM	1:100
ELISA	Assay dependent

Not tested in other applications.

Calculated MW 88 kDa. ([Note](#))

Properties

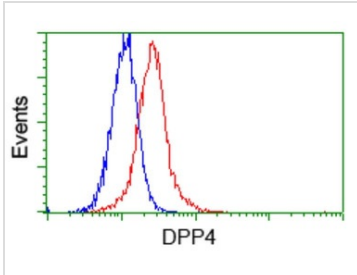
Form	Liquid
Buffer	PBS, 1% BSA, 50% Glycerol
Preservative	0.02% Sodium azide
Storage	Store as concentrated solution. Centrifuge briefly prior to opening vial. For short-term storage (1-2 weeks), store at 4°C. For long-term storage, aliquot and store at -20°C or below. Avoid multiple freeze-thaw cycles.
Concentration	1 mg/ml (Please refer to the vial label for the specific concentration.)
Immunogen	Full length human recombinant protein of human DPP4 (NP_001926) produced in HEK293T cell.
Purification	Purified by affinity chromatography From tissue culture supernatant
Conjugation	Unconjugated

For full product information, images and publications, please visit our [website](#).

For laboratory research use only. Not for any clinical, therapeutic, or diagnostic use in humans or animals. Not for animal or human consumption.

Note

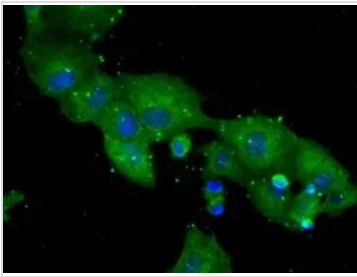
Purchasers shall not, and agree not to enable third parties to, analyze, copy, reverse engineer or otherwise attempt to determine the structure or sequence of the product.

DATA IMAGES

GTx84602 FCM Image

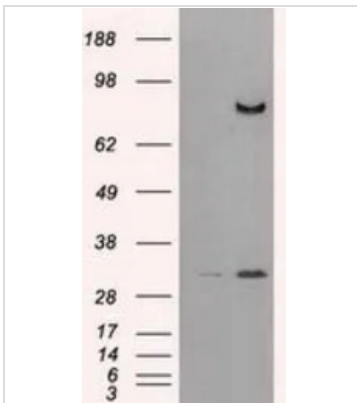
FACS analysis of HeLa cells using GTx84602 CD26 antibody [11D7].

Red : Primary antibody

Blue : Negative control antibody

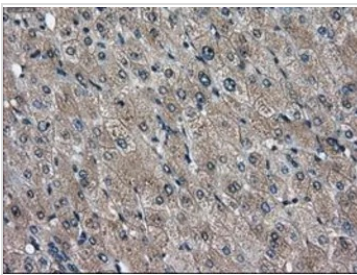

GTx84602 ICC/IF Image

ICC/IF analysis of COS7 cells transiently transfected with CD26 plasmid using GTx84602 CD26 antibody [11D7].


GTx84602 WB Image

WB analysis of HEK293T cells transfected with CD26 plasmid (Right) or empty vector (Left) for 48 hrs using GTx84602 CD26 antibody [11D7].

Loading : 5 ug per lane


GTx84602 IHC-P Image

IHC-P analysis of liver tissue using GTx84602 CD26 antibody [11D7].

Antigen retrieval : Heat-induced epitope retrieval by 10mM citrate buffer, pH6.0, 100°C for 10min.

Dilution : 1:50



For full product information, images and publications, please visit our [website](https://www.genetex.com).