

## DNAJA2 antibody [3A1]

**Cat. No. GTX84610**

<b>Host</b>	Mouse
<b>Clonality</b>	Monoclonal
<b>Isotype</b>	IgG2a
<b>Applications</b>	WB, ICC/IF, IHC-P, FCM
<b>Reactivity</b>	Human, Mouse, Rat, Dog, Monkey

References ( 1 )

Package

100 µl

## Applications

**Application Note**

\*Optimal dilutions/concentrations should be determined by the researcher.

Suggested dilution	Recommended dilution
WB	1:2000
ICC/IF	1:100
IHC-P	1:150
FCM	1:100

Not tested in other applications.

**Calculated MW** 46 kDa. ( [Note](#) )

## Properties

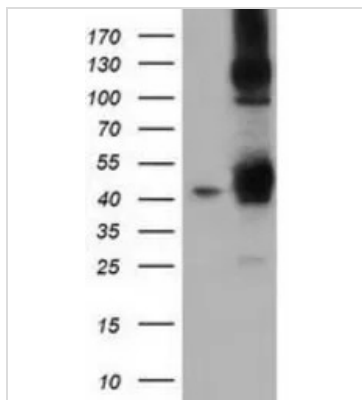
<b>Form</b>	Liquid
<b>Buffer</b>	PBS, 1% BSA, 50% Glycerol
<b>Preservative</b>	0.02% Sodium azide
<b>Storage</b>	Store as concentrated solution. Centrifuge briefly prior to opening vial. For short-term storage (1-2 weeks), store at 4°C. For long-term storage, aliquot and store at -20°C or below. Avoid multiple freeze-thaw cycles.
<b>Concentration</b>	0.7 mg/ml (Please refer to the vial label for the specific concentration.)
<b>Immunogen</b>	Full length human recombinant protein of human DNAJA2 (NP_005871) produced in HEK293T cell.
<b>Purification</b>	Purified by affinity chromatography
<b>Conjugation</b>	Unconjugated

**Note**

For laboratory research use only. Not for any clinical, therapeutic, or diagnostic use in humans or animals. Not for animal or human consumption.

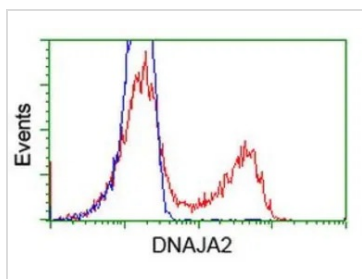
Purchasers shall not, and agree not to enable third parties to, analyze, copy, reverse engineer or otherwise attempt to determine the structure or sequence of the product.

For full product information, images and publications, please visit our [website](#).

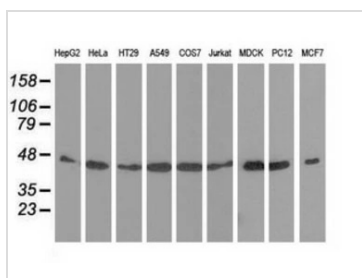
**DATA IMAGES**

**GTX84610 WB Image**

WB analysis of HEK293T cells transfected with DNAJA2 plasmid (Right) or empty vector (Left) for 48 hrs using GTX84610 DNAJA2 antibody [3A1].

Loading : 5 ug per lane

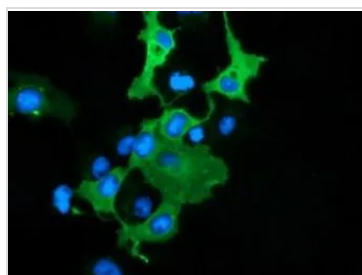

**GTX84610 FCM Image**

FACS analysis of HEK293T cells transfected with either DNAJA2 plasmid(Red) or empty vector control plasmid(Blue) using GTX84610 DNAJA2 antibody [3A1].


**GTX84610 WB Image**

WB analysis of various cell lines using GTX84610 DNAJA2 antibody [3A1].

Loading : 35 ug per lane


**GTX84610 ICC/IF Image**

ICC/IF analysis of COS7 cells transiently transfected with DNAJA2 plasmid using GTX84610 DNAJA2 antibody [3A1].



For full product information, images and publications, please visit our [website](http://www.genetex.com).