

ICAD antibody [3F12]

Cat. No. GTX84620

Host	Mouse
Clonality	Monoclonal
Isotype	IgG1
Applications	WB, ICC/IF
Reactivity	Human, Monkey

Package
100 µl

Applications

Application Note

*Optimal dilutions/concentrations should be determined by the researcher.

Suggested dilution	Recommended dilution
WB	1:200-1:500
ICC/IF	1:100

Not tested in other applications.

Calculated MW 37 kDa. ([Note](#))

Properties

Form	Liquid
Buffer	PBS, 1% BSA, 50% Glycerol
Preservative	0.02% Sodium azide
Storage	Store as concentrated solution. Centrifuge briefly prior to opening vial. For short-term storage (1-2 weeks), store at 4°C. For long-term storage, aliquot and store at -20°C or below. Avoid multiple freeze-thaw cycles.
Concentration	0.2 mg/ml (Please refer to the vial label for the specific concentration.)
Immunogen	Full length human recombinant protein of human DFFA (NP_004392) produced in E.coli.
Purification	Purified by affinity chromatography
Conjugation	Unconjugated

Note

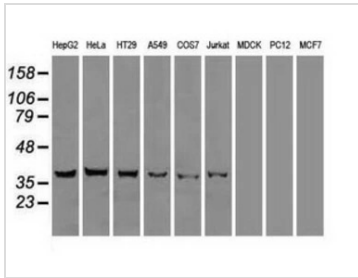
For laboratory research use only. Not for any clinical, therapeutic, or diagnostic use in humans or animals. Not for animal or human consumption.

Purchasers shall not, and agree not to enable third parties to, analyze, copy, reverse engineer or otherwise attempt to determine the structure or sequence of the product.



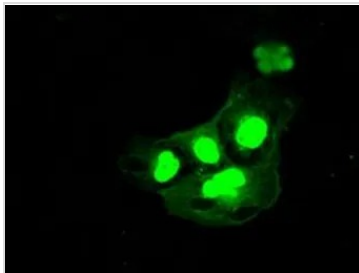
For full product information, images and publications, please visit our [website](#).

DATA IMAGES



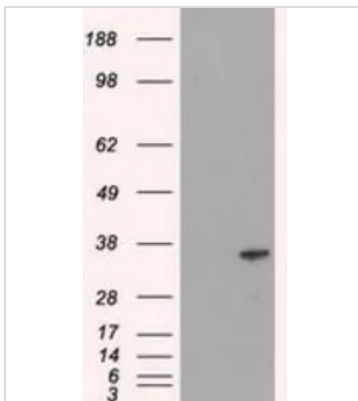
GTX84620 WB Image

WB analysis of various cell lines using GTX84620 ICAD antibody [3F12].
Loading : 35 ug per lane



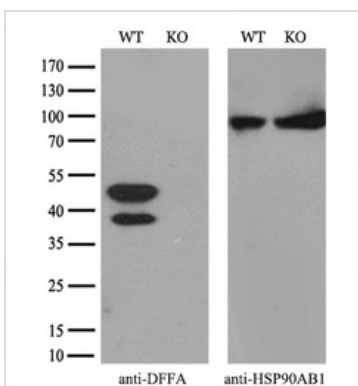
GTX84620 ICC/IF Image

ICC/IF analysis of COS7 cells transiently transfected with ICAD plasmid using GTX84620 ICAD antibody [3F12].



GTX84620 WB Image

WB analysis of HEK293T cells transfected with ICAD plasmid (Right) or empty vector (Left) for 48 hrs using GTX84620 ICAD antibody [3F12].
Loading : 5 ug per lane



GTX84620 WB Image

WB analysis of wild type and ICAD knock out HeLa cell lysate(10µg per lane) using GTX84620 ICAD antibody [3F12].
Dilution : 1:500



For full product information, images and publications, please visit our [website](https://www.genetex.com).