

DAP Kinase 2 antibody [1C5]

Cat. No. GTX84631

Host	Mouse
Clonality	Monoclonal
Isotype	IgG3
Applications	WB, ICC/IF, IHC-P, FCM, IP
Reactivity	Human, Rat, Dog, Monkey

Package
100 µl

Applications

Application Note

*Optimal dilutions/concentrations should be determined by the researcher.

Suggested dilution	Recommended dilution
WB	1:2000
ICC/IF	1:100
IHC-P	1:50
FCM	1:100
IP	2ug/500ul

Not tested in other applications.

Calculated MW 43 kDa. ([Note](#))

Properties

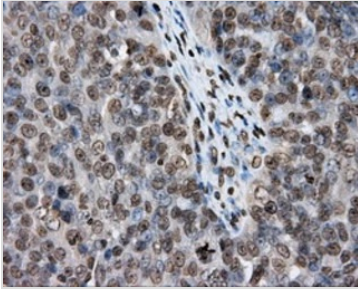
Form	Liquid
Buffer	PBS, 1% BSA, 50% Glycerol
Preservative	0.02% Sodium azide
Storage	Store as concentrated solution. Centrifuge briefly prior to opening vial. For short-term storage (1-2 weeks), store at 4°C. For long-term storage, aliquot and store at -20°C or below. Avoid multiple freeze-thaw cycles.
Concentration	0.76 mg/ml (Please refer to the vial label for the specific concentration.)
Immunogen	Full length human recombinant protein of human DAPK2 (NP_055141) produced in HEK293T cell.
Purification	Purified by affinity chromatography
Conjugation	Unconjugated

For full product information, images and publications, please visit our [website](#).

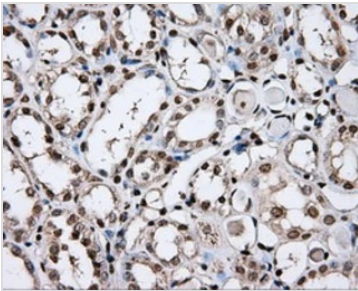
For laboratory research use only. Not for any clinical, therapeutic, or diagnostic use in humans or animals. Not for animal or human consumption.

Note

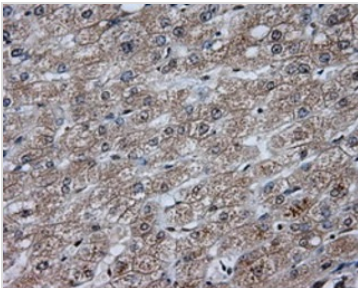
Purchasers shall not, and agree not to enable third parties to, analyze, copy, reverse engineer or otherwise attempt to determine the structure or sequence of the product.

DATA IMAGES

GTX84631 IHC-P Image

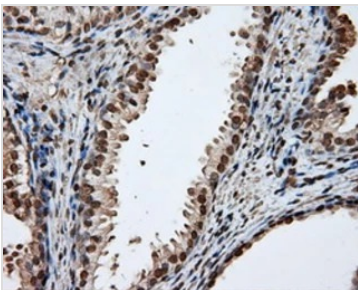
IHC-P analysis of human ovary adenocarcinoma tissue using GTX84631 DAP Kinase 2 antibody [1C5].
Antigen retrieval : Heat-induced epitope retrieval by 10mM citrate buffer, pH6.0, 100°C for 10min.


GTX84631 IHC-P Image

IHC-P analysis of human kidney tissue using GTX84631 DAP Kinase 2 antibody [1C5].
Antigen retrieval : Heat-induced epitope retrieval by 10mM citrate buffer, pH6.0, 100°C for 10min.


GTX84631 IHC-P Image

IHC-P analysis of human liver tissue using GTX84631 DAP Kinase 2 antibody [1C5].
Antigen retrieval : Heat-induced epitope retrieval by 10mM citrate buffer, pH6.0, 100°C for 10min.


GTX84631 IHC-P Image

IHC-P analysis of human prostate tissue using GTX84631 DAP Kinase 2 antibody [1C5].
Antigen retrieval : Heat-induced epitope retrieval by 10mM citrate buffer, pH6.0, 100°C for 10min.



For full product information, images and publications, please visit our [website](#).