

Cyp7b1 antibody [7H10]

Cat. No. GTX84633

Host	Mouse
Clonality	Monoclonal
Isotype	IgG2b
Applications	WB
Reactivity	Human, Dog

Package
100 µl

Applications

Application Note

*Optimal dilutions/concentrations should be determined by the researcher.

Suggested dilution	Recommended dilution
WB	1:1000

Not tested in other applications.

Calculated MW 58 kDa. ([Note](#))

Properties

Form	Liquid
Buffer	PBS, 1% BSA, 50% Glycerol
Preservative	0.02% Sodium azide
Storage	Store as concentrated solution. Centrifuge briefly prior to opening vial. For short-term storage (1-2 weeks), store at 4°C. For long-term storage, aliquot and store at -20°C or below. Avoid multiple freeze-thaw cycles.
Concentration	0.63 mg/ml (Please refer to the vial label for the specific concentration.)
Immunogen	Recombinant protein expressed in E.coli corresponding to amino acids 350-506 of human Cyp7b1
Purification	Purified by affinity chromatography
Conjugation	Unconjugated

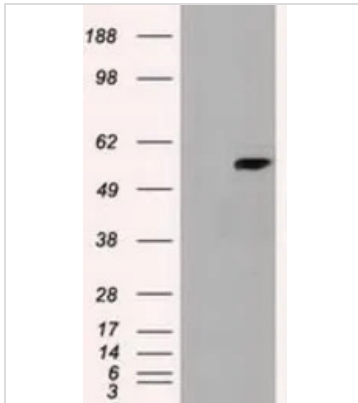
Note

For laboratory research use only. Not for any clinical, therapeutic, or diagnostic use in humans or animals. Not for animal or human consumption.

Purchasers shall not, and agree not to enable third parties to, analyze, copy, reverse engineer or otherwise attempt to determine the structure or sequence of the product.

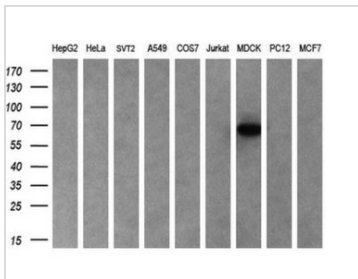


For full product information, images and publications, please visit our [website](#).

DATA IMAGES

GTX84633 WB Image

WB analysis of HEK293T cells transfected with Cyp7b1 plasmid (Right) or empty vector (Left) for 48 hrs using GTX84633 Cyp7b1 antibody [7H10].

Loading : 5 ug per lane


GTX84633 WB Image

WB analysis of various cell lines using GTX84633 Cyp7b1 antibody [7H10].

Loading : 35 ug per lane

Dilution : 1:200



For full product information, images and publications, please visit our [website](https://www.genetex.com).