

CYP2E1 antibody [9E6]

Cat. No. GTX84635

Host	Mouse
Clonality	Monoclonal
Isotype	IgG1
Applications	WB, ICC/IF, IHC-P
Reactivity	Human

Package
100 µl

Applications

Application Note

*Optimal dilutions/concentrations should be determined by the researcher.

Suggested dilution	Recommended dilution
WB	1:500
ICC/IF	1:100
IHC-P	1:50

Not tested in other applications.

Calculated MW 57 kDa. ([Note](#))

Properties

Form	Liquid
Buffer	PBS, 1% BSA, 50% Glycerol
Preservative	0.02% Sodium azide
Storage	Store as concentrated solution. Centrifuge briefly prior to opening vial. For short-term storage (1-2 weeks), store at 4°C. For long-term storage, aliquot and store at -20°C or below. Avoid multiple freeze-thaw cycles.
Concentration	0.74 mg/ml (Please refer to the vial label for the specific concentration.)
Immunogen	Full length human recombinant protein of human CYP2E1 (NP_000764) produced in HEK293T cell.
Purification	Purified by affinity chromatography
Conjugation	Unconjugated

Note

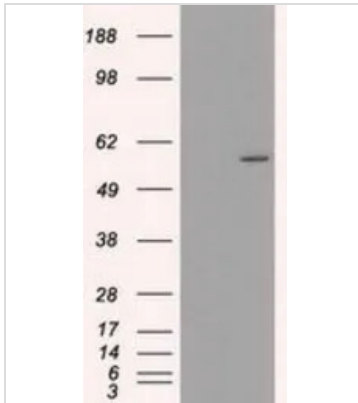
For laboratory research use only. Not for any clinical, therapeutic, or diagnostic use in humans or animals. Not for animal or human consumption.

Purchasers shall not, and agree not to enable third parties to, analyze, copy, reverse engineer or otherwise attempt to determine the structure or sequence of the product.



For full product information, images and publications, please visit our [website](#).

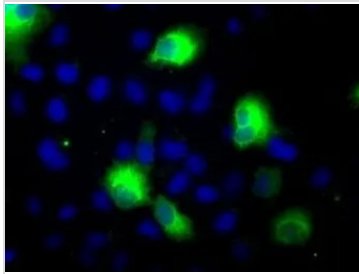
DATA IMAGES



GTx84635 WB Image

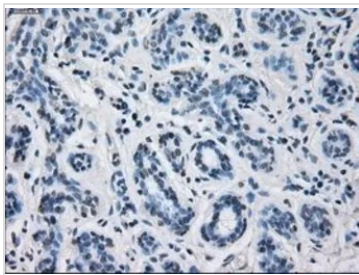
WB analysis of HEK293T cells transfected with CYP2E1 plasmid (Right) or empty vector (Left) for 48 hrs using GTx84635 CYP2E1 antibody [9E6].

Loading : 5 ug per lane



GTx84635 ICC/IF Image

ICC/IF analysis of COS7 cells transiently transfected with CYP2E1 plasmid using GTx84635 CYP2E1 antibody [9E6].

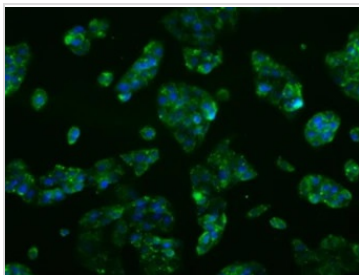


GTx84635 IHC-P Image

IHC-P analysis of breast tissue using GTx84635 CYP2E1 antibody [9E6].

Antigen retrieval : Heat-induced epitope retrieval by 10mM citrate buffer, pH6.0, 100°C for 10min.

Dilution : 1:50



GTx84635 ICC/IF Image

ICC/IF analysis of HepG2 cells using GTx84635 CYP2E1 antibody [9E6].



For full product information, images and publications, please visit our [website](https://www.genetex.com).