

CYP2E1 antibody [5B9]

Cat. No. GTX84636

Host	Mouse
Clonality	Monoclonal
Isotype	IgG1
Application	WB, ICC/IF, IHC-P
Reactivity	Human

Package
100 µl

APPLICATION

Application Note

*Optimal dilutions/concentrations should be determined by the researcher.

Suggested dilution	Recommended dilution
WB	1:500
ICC/IF	1:100
IHC-P	1:50

Not tested in other applications.

Calculated MW 57 kDa. ([Note](#))

PROPERTIES

Form	Liquid
Buffer	PBS, 1% BSA, 50% Glycerol
Preservative	0.02% Sodium azide
Storage	Store as concentrated solution. Centrifuge briefly prior to opening vial. For short-term storage (1-2 weeks), store at 4°C. For long-term storage, aliquot and store at -20°C or below. Avoid multiple freeze-thaw cycles.
Concentration	0.53 mg/ml (Please refer to the vial label for the specific concentration.)
Immunogen	Full length human recombinant protein of human CYP2E1 (NP_000764) produced in HEK293T cell.
Purification	Purified by affinity chromatography
Conjugation	Unconjugated

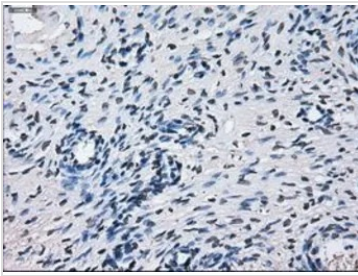
Note

For laboratory research use only. Not for any clinical, therapeutic, or diagnostic use in humans or animals. Not for animal or human consumption.

Purchasers shall not, and agree not to enable third parties to, analyze, copy, reverse engineer or otherwise attempt to determine the structure or sequence of the product.



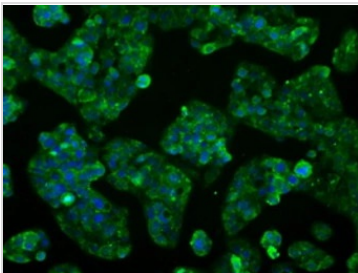
For full product information, images and publications, please visit our [website](#).

DATA IMAGES

GTx84636 IHC-P Image

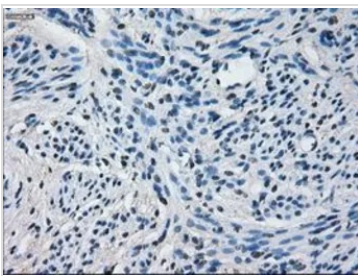
IHC-P analysis of ovary tissue using GTx84636 CYP2E1 antibody [5B9].

Antigen retrieval : Heat-induced epitope retrieval by 10mM citrate buffer, pH6.0, 100°C for 10min.

Dilution : 1:50


GTx84636 ICC/IF Image

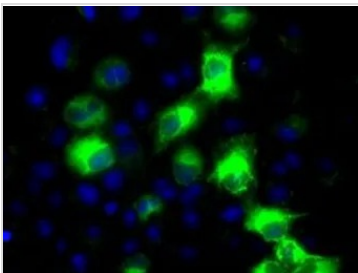
ICC/IF analysis of HepG2 cells using GTx84636 CYP2E1 antibody [5B9].


GTx84636 IHC-P Image

IHC-P analysis of endometrium tissue using GTx84636 CYP2E1 antibody [5B9].

Antigen retrieval : Heat-induced epitope retrieval by 10mM citrate buffer, pH6.0, 100°C for 10min.

Dilution : 1:50


GTx84636 ICC/IF Image

ICC/IF analysis of COS7 cells transiently transfected with CYP2E1 plasmid using GTx84636 CYP2E1 antibody [5B9].



For full product information, images and publications, please visit our [website](#).