

CYB5R3 antibody [2A10]

Cat. No. GTX84646

Host	Mouse
Clonality	Monoclonal
Isotype	IgG2b
Applications	WB, IHC-P, FCM, IP
Reactivity	Human, Dog, Monkey

References (1)

Package

100 µl

Applications

Application Note

*Optimal dilutions/concentrations should be determined by the researcher.

Suggested dilution	Recommended dilution
WB	1:2000
IHC-P	1:150
FCM	1:100
IP	Assay dependent

Not tested in other applications.

Calculated MW 34 kDa. ([Note](#))

Properties

Form	Liquid
Buffer	PBS, 1% BSA, 50% Glycerol
Preservative	0.02% Sodium azide
Storage	Store as concentrated solution. Centrifuge briefly prior to opening vial. For short-term storage (1-2 weeks), store at 4°C. For long-term storage, aliquot and store at -20°C or below. Avoid multiple freeze-thaw cycles.
Concentration	0.76 mg/ml (Please refer to the vial label for the specific concentration.)
Immunogen	Full length human recombinant protein of human CYB5R3 (NP_000389) produced in HEK293T cell.
Purification	Purified by affinity chromatography
Conjugation	Unconjugated

Note

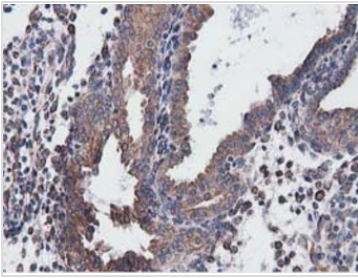
For laboratory research use only. Not for any clinical, therapeutic, or diagnostic use in humans or animals. Not for animal or human consumption.

Purchasers shall not, and agree not to enable third parties to, analyze, copy, reverse engineer or otherwise attempt to determine the structure or sequence of the product.



For full product information, images and publications, please visit our [website](#).

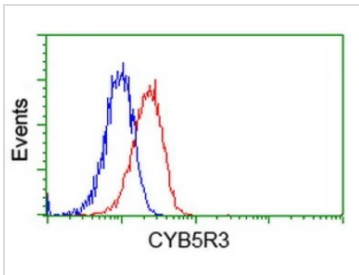
DATA IMAGES



GTX84646 IHC-P Image

IHC-P analysis of human prostate carcinoma tissue using GTX84646 CYB5R3 antibody [2A10].

Antigen retrieval : Heat-induced epitope retrieval by 10mM citrate buffer, pH6.0, 100°C for 10min.

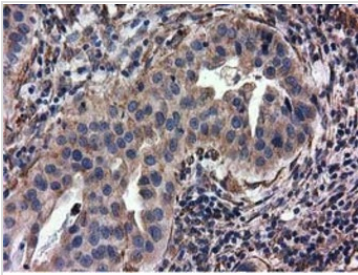


GTX84646 FCM Image

FACS analysis of Jurkat cells using GTX84646 CYB5R3 antibody [2A10].

Red : Primary antibody

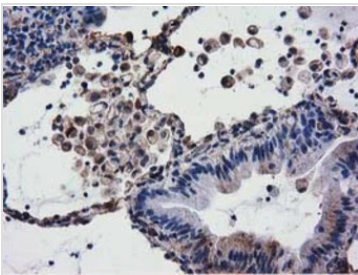
Blue : Negative control antibody



GTX84646 IHC-P Image

IHC-P analysis of human bladder carcinoma tissue using GTX84646 CYB5R3 antibody [2A10].

Antigen retrieval : Heat-induced epitope retrieval by 10mM citrate buffer, pH6.0, 100°C for 10min.



GTX84646 IHC-P Image

IHC-P analysis of human lung carcinoma tissue using GTX84646 CYB5R3 antibody [2A10].

Antigen retrieval : Heat-induced epitope retrieval by 10mM citrate buffer, pH6.0, 100°C for 10min.



For full product information, images and publications, please visit our [website](#).