

CRYM antibody [1G7]

Cat. No. GTX84654

Host	Mouse
Clonality	Monoclonal
Isotype	IgG2b
Application	WB, ICC/IF, IHC-P, IHC-Fr, FACS
Reactivity	Human, Mouse, Rat, Monkey, Marmoset

Reference (3)

Package

100 µl

APPLICATION

Application Note

*Optimal dilutions/concentrations should be determined by the researcher.

Suggested dilution	Recommended dilution
WB	1:500-1:2000
ICC/IF	1:100
IHC-P	1:150
IHC-Fr	Assay dependent
FACS	1:100

Not tested in other applications.

Calculated MW 34 kDa. ([Note](#))

PROPERTIES

Form	Liquid
Buffer	PBS, 1% BSA, 50% Glycerol
Preservative	0.02% Sodium azide
Storage	Store as concentrated solution. Centrifuge briefly prior to opening vial. For short-term storage (1-2 weeks), store at 4°C. For long-term storage, aliquot and store at -20°C or below. Avoid multiple freeze-thaw cycles.
Concentration	1 mg/ml (Please refer to the vial label for the specific concentration.)
Immunogen	Full length human recombinant protein of human CRYM (NP_001879) produced in HEK293T cell.
Purification	Purified by affinity chromatography
Conjugation	Unconjugated

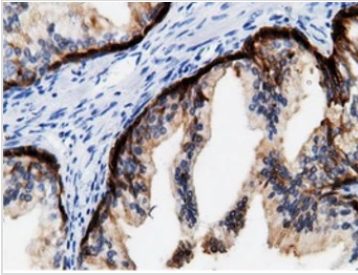


For full product information, images and publications, please visit our [website](#).

For laboratory research use only. Not for any clinical, therapeutic, or diagnostic use in humans or animals. Not for animal or human consumption.

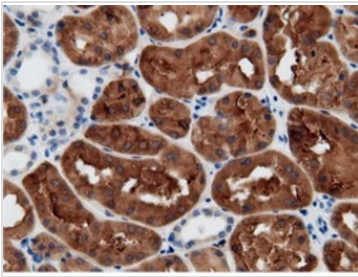
Note

Purchasers shall not, and agree not to enable third parties to, analyze, copy, reverse engineer or otherwise attempt to determine the structure or sequence of the product.

DATA IMAGES

GTX84654 IHC-P Image

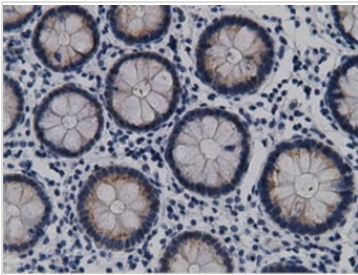
IHC-P analysis of human prostate tissue using GTX84654 CRYM antibody [1G7].

Antigen retrieval : Heat-induced epitope retrieval by 10mM citrate buffer, pH6.0, 100°C for 10min.


GTX84654 IHC-P Image

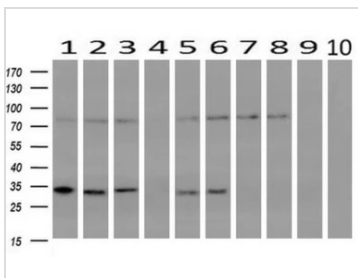
IHC-P analysis of human kidney tissue using GTX84654 CRYM antibody [1G7].

Antigen retrieval : Heat-induced epitope retrieval by 10mM citrate buffer, pH6.0, 100°C for 10min.


GTX84654 IHC-P Image

IHC-P analysis of human colon tissue using GTX84654 CRYM antibody [1G7].

Antigen retrieval : Heat-induced epitope retrieval by 10mM citrate buffer, pH6.0, 100°C for 10min.


GTX84654 WB Image

WB analysis of human tissues (Lane 1-Testis ; Lane 2-Omentum ; Lane 3-Uterus ; Lane 4-Breast ; Lane 5-Brain ; Lane 6-Liver ; Lane 7-Ovary ; Lane 8-Thyroid gland ; Lane 9-colon ; Lane 10-spleen) using GTX84654 CRYM antibody [1G7].

Loading : 10 ug per lane

Dilution : 1:200



For full product information, images and publications, please visit our [website](https://www.genetex.com).