

CRYM antibody [1B5]

Cat. No. GTX84655

Host	Mouse
Clonality	Monoclonal
Isotype	IgG2a
Applications	WB, ICC/IF, IHC-P
Reactivity	Human, Mouse, Dog, Monkey

Package
100 µl

Applications

Application Note

*Optimal dilutions/concentrations should be determined by the researcher.

Suggested dilution	Recommended dilution
WB	1:2000
ICC/IF	1:100
IHC-P	1:300

Not tested in other applications.

Calculated MW 34 kDa. ([Note](#))

Properties

Form	Liquid
Buffer	PBS, 1% BSA, 50% Glycerol
Preservative	0.02% Sodium azide
Storage	Store as concentrated solution. Centrifuge briefly prior to opening vial. For short-term storage (1-2 weeks), store at 4°C. For long-term storage, aliquot and store at -20°C or below. Avoid multiple freeze-thaw cycles.
Concentration	0.58 mg/ml (Please refer to the vial label for the specific concentration.)
Immunogen	Full length human recombinant protein of human CRYM (NP_001879) produced in HEK293T cell.
Purification	Purified by affinity chromatography
Conjugation	Unconjugated

Note

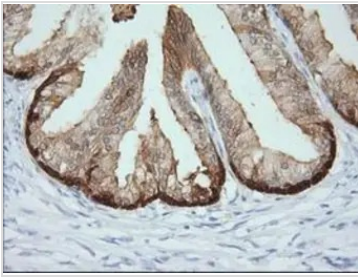
For laboratory research use only. Not for any clinical, therapeutic, or diagnostic use in humans or animals. Not for animal or human consumption.

Purchasers shall not, and agree not to enable third parties to, analyze, copy, reverse engineer or otherwise attempt to determine the structure or sequence of the product.



For full product information, images and publications, please visit our [website](#).

DATA IMAGES

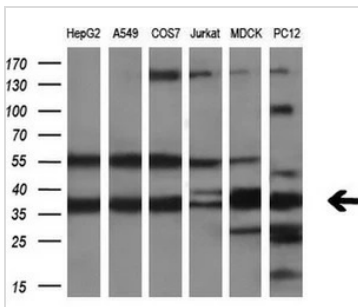


GTx84655 IHC-P Image

IHC-P analysis of human prostate tissue using GTx84655 CRYM antibody [1B5].

Antigen retrieval : Heat-induced epitope retrieval by 10mM citrate buffer, pH6.0, 100°C for 10min.

Dilution : 1:50

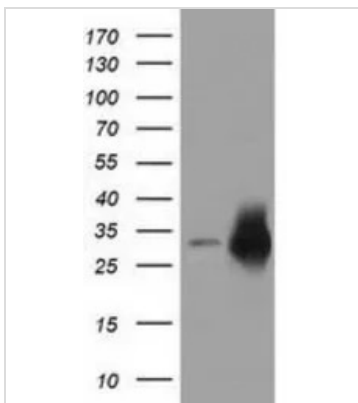


GTx84655 WB Image

WB analysis of various cell lines using GTx84655 CRYM antibody [1B5].

Loading : 10 ug per lane

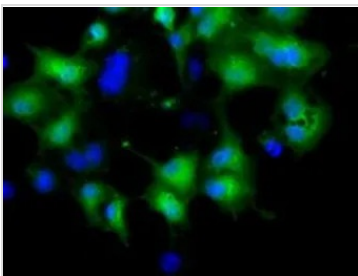
Dilution : 1:200



GTx84655 WB Image

WB analysis of HEK293T cells transfected with CRYM plasmid (Right) or empty vector (Left) for 48 hrs using GTx84655 CRYM antibody [1B5].

Loading : 5 ug per lane



GTx84655 ICC/IF Image

ICC/IF analysis of COS7 cells transiently transfected with CRYM plasmid using GTx84655 CRYM antibody [1B5].



For full product information, images and publications, please visit our [website](https://www.genetex.com).