

## alpha B Crystallin antibody [6D11]

**Cat. No. GTX84657**

<b>Host</b>	Mouse
<b>Clonality</b>	Monoclonal
<b>Isotype</b>	IgG1
<b>Applications</b>	WB, ICC/IF, IHC-P, FCM, IP
<b>Reactivity</b>	Human, Rat, Monkey

**Package**  
 100 µl

## Applications

**Application Note**

\*Optimal dilutions/concentrations should be determined by the researcher.

Suggested dilution	Recommended dilution
WB	1:500
ICC/IF	1:50-1:100
IHC-P	1:50
FCM	1:100
IP	2ug/500ul

Not tested in other applications.

**Calculated MW** 20 kDa. ( [Note](#) )

## Properties

<b>Form</b>	Liquid
<b>Buffer</b>	PBS, 1% BSA, 50% Glycerol
<b>Preservative</b>	0.02% Sodium azide
<b>Storage</b>	Store as concentrated solution. Centrifuge briefly prior to opening vial. For short-term storage (1-2 weeks), store at 4°C. For long-term storage, aliquot and store at -20°C or below. Avoid multiple freeze-thaw cycles.
<b>Concentration</b>	1 mg/ml (Please refer to the vial label for the specific concentration.)
<b>Immunogen</b>	Full length human recombinant protein of human CRYAB (NP_001876) produced in HEK293T cell.
<b>Purification</b>	Purified by affinity chromatography From tissue culture supernatant
<b>Conjugation</b>	Unconjugated

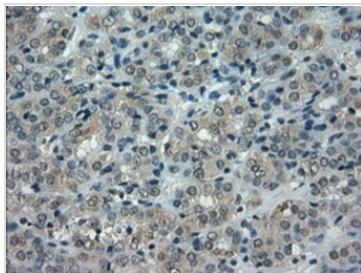


For full product information, images and publications, please visit our [website](#).

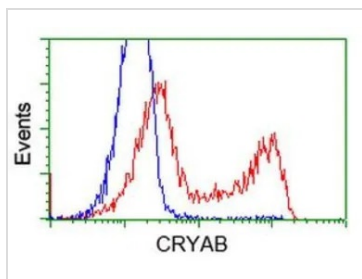
For laboratory research use only. Not for any clinical, therapeutic, or diagnostic use in humans or animals. Not for animal or human consumption.

**Note**

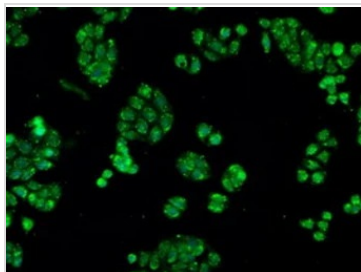
Purchasers shall not, and agree not to enable third parties to, analyze, copy, reverse engineer or otherwise attempt to determine the structure or sequence of the product.

**DATA IMAGES**

**GTX84657 IHC-P Image**

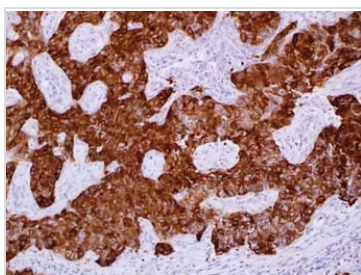
IHC-P analysis of human thyroid carcinoma tissue using GTX84657 alpha B Crystallin antibody [6D11].  
Antigen retrieval : Heat-induced epitope retrieval by 10mM citrate buffer, pH6.0, 100°C for 10min.


**GTX84657 FCM Image**

FACS analysis of HEK293T cells transfected with either alpha B Crystallin plasmid(Red) or empty vector control plasmid(Blue) using GTX84657 alpha B Crystallin antibody [6D11].


**GTX84657 ICC/IF Image**

ICC/IF analysis of HT29 cells using GTX84657 alpha B Crystallin antibody [6D11].


**GTX84657 IHC-P Image**

IHC-P analysis of human smooth muscle cancer tissue using GTX84657 alpha B Crystallin antibody [6D11].



For full product information, images and publications, please visit our [website](https://www.genetex.com).