

alpha B Crystallin antibody [3C2]

Cat. No. GTX84661

Host	Mouse
Clonality	Monoclonal
Isotype	IgG1
Applications	WB, IHC-P, FCM, IP
Reactivity	Human, Monkey

Package
100 µl

Applications

Application Note

*Optimal dilutions/concentrations should be determined by the researcher.

Suggested dilution	Recommended dilution
WB	1:5000
IHC-P	1:50
FCM	1:100
IP	2ug/500ul

Not tested in other applications.

Calculated MW 20 kDa. ([Note](#))

Properties

Form	Liquid
Buffer	PBS, 1% BSA, 50% Glycerol
Preservative	0.02% Sodium azide
Storage	Store as concentrated solution. Centrifuge briefly prior to opening vial. For short-term storage (1-2 weeks), store at 4°C. For long-term storage, aliquot and store at -20°C or below. Avoid multiple freeze-thaw cycles.
Concentration	1 mg/ml (Please refer to the vial label for the specific concentration.)
Immunogen	Full length human recombinant protein of human CRYAB (NP_001876) produced in HEK293T cell.
Purification	Purified by affinity chromatography
Conjugation	Unconjugated

Note

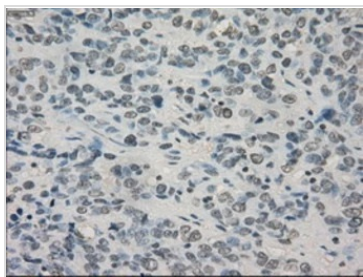
For laboratory research use only. Not for any clinical, therapeutic, or diagnostic use in humans or animals. Not for animal or human consumption.

Purchasers shall not, and agree not to enable third parties to, analyze, copy, reverse engineer or otherwise attempt to determine the structure or sequence of the product.



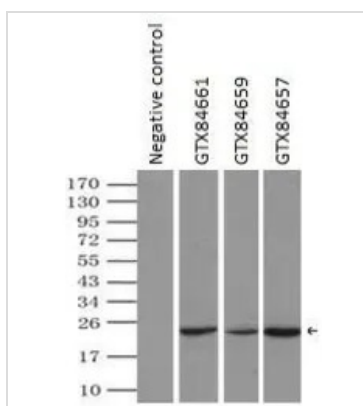
For full product information, images and publications, please visit our [website](#).

DATA IMAGES



GTX84661 IHC-P Image

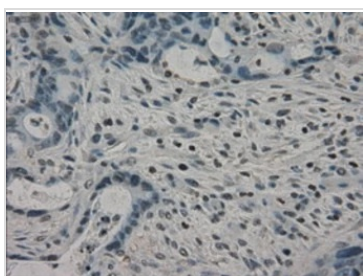
IHC-P analysis of human bladder carcinoma tissue using GTX84661 alpha B Crystallin antibody [3C2].
Antigen retrieval : Heat-induced epitope retrieval by 10mM citrate buffer, pH6.0, 100°C for 10min.



GTX84661 IP Image

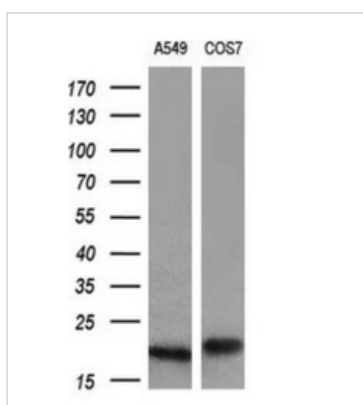
IP analysis of DDDDK tagged alpha B Crystallin overexpressed HEK293T lysate using GTX84661 alpha B Crystallin antibody [3C2]. After extensive wash to remove any non-specific binding, the immuno-precipitated products were analyzed with rabbit anti-DDDDK polyclonal antibody.

IP reaction : 2µg antibody / 500µl cell lysate



GTX84661 IHC-P Image

IHC-P analysis of human colon adenocarcinoma tissue using GTX84661 alpha B Crystallin antibody [3C2].
Antigen retrieval : Heat-induced epitope retrieval by 10mM citrate buffer, pH6.0, 100°C for 10min.



GTX84661 WB Image

WB analysis of A549 and COS-7 cell lysate using GTX84661 alpha B Crystallin antibody [3C2].

Loading : 10 ug per lane

Dilution : 1:200



For full product information, images and publications, please visit our [website](http://www.genetex.com).