

## COX6B2 antibody [1F5]

Cat. No. GTX84668

Host	Mouse
Clonality	Monoclonal
Isotype	IgG1
Applications	WB, ICC/IF
Reactivity	Human

Package  
100 µl

## Applications

## Application Note

\*Optimal dilutions/concentrations should be determined by the researcher.

Suggested dilution	Recommended dilution
WB	1:500
ICC/IF	1:100

Not tested in other applications.

Calculated MW 11 kDa. ( [Note](#) )

## Properties

Form	Liquid
Buffer	PBS, 1% BSA, 50% Glycerol
Preservative	0.02% Sodium azide
Storage	Store as concentrated solution. Centrifuge briefly prior to opening vial. For short-term storage (1-2 weeks), store at 4°C. For long-term storage, aliquot and store at -20°C or below. Avoid multiple freeze-thaw cycles.
Concentration	0.84 mg/ml (Please refer to the vial label for the specific concentration.)
Immunogen	Full length human recombinant protein of human COX6B2 (NP_653214) produced in HEK293T cell.
Purification	Purified by affinity chromatography
Conjugation	Unconjugated

## Note

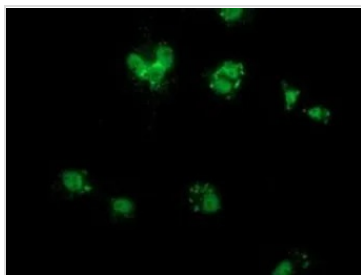
For laboratory research use only. Not for any clinical, therapeutic, or diagnostic use in humans or animals. Not for animal or human consumption.

Purchasers shall not, and agree not to enable third parties to, analyze, copy, reverse engineer or otherwise attempt to determine the structure or sequence of the product.



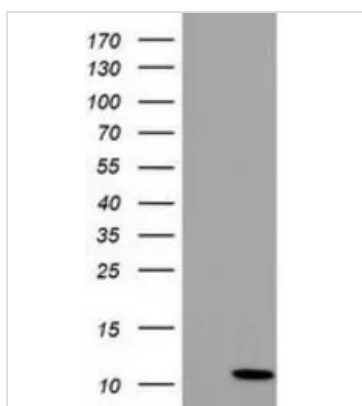
For full product information, images and publications, please visit our [website](#).

## DATA IMAGES



### GTX84668 ICC/IF Image

ICC/IF analysis of COS7 cells transiently transfected with COX6B2 plasmid using GTX84668 COX6B2 antibody [1F5].



### GTX84668 WB Image

WB analysis of HEK293T cells transfected with COX6B2 plasmid (Right) or empty vector (Left) for 48 hrs using GTX84668 COX6B2 antibody [1F5].

Loading : 5 ug per lane



For full product information, images and publications, please visit our [website](#).