

## Chk2 antibody [2F4]

Cat. No. GTX84685

Host	Mouse
Clonality	Monoclonal
Isotype	IgG2b
Applications	WB, ICC/IF, FCM
Reactivity	Human, Mouse, Rat, Dog, Monkey

Package  
100 µl

## Applications

## Application Note

\*Optimal dilutions/concentrations should be determined by the researcher.

Suggested dilution	Recommended dilution
WB	1:1000-1:2000
ICC/IF	1:50-1:100
FCM	1:100

Not tested in other applications.

Calculated MW 61 kDa. ( [Note](#) )

## Properties

Form	Liquid
Buffer	PBS, 1% BSA, 50% Glycerol
Preservative	0.02% Sodium azide
Storage	Store as concentrated solution. Centrifuge briefly prior to opening vial. For short-term storage (1-2 weeks), store at 4°C. For long-term storage, aliquot and store at -20°C or below. Avoid multiple freeze-thaw cycles.
Concentration	1.2 mg/ml (Please refer to the vial label for the specific concentration.)
Immunogen	Full length human recombinant protein of human CHEK2 (NP_009125) produced in HEK293T cell.
Purification	Purified by affinity chromatography
Conjugation	Unconjugated

## Note

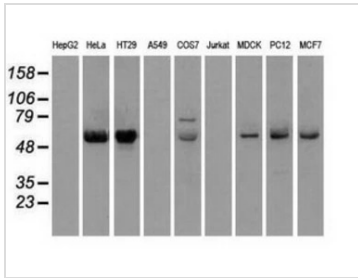
For laboratory research use only. Not for any clinical, therapeutic, or diagnostic use in humans or animals. Not for animal or human consumption.

Purchasers shall not, and agree not to enable third parties to, analyze, copy, reverse engineer or otherwise attempt to determine the structure or sequence of the product.



For full product information, images and publications, please visit our [website](#).

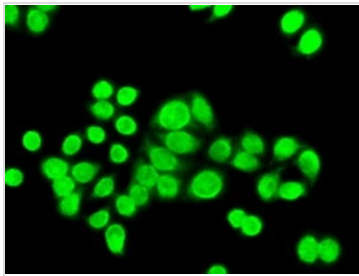
## DATA IMAGES



### GTX84685 WB Image

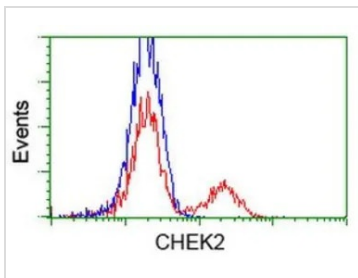
WB analysis of various cell lines using GTX84685 Chk2 antibody [2F4].

Loading : 35 ug per lane



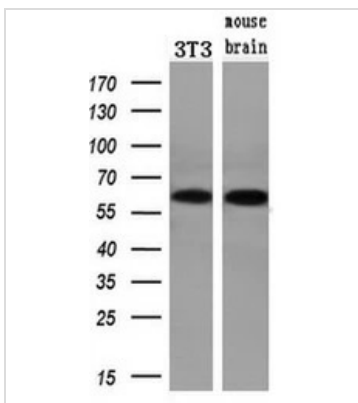
### GTX84685 ICC/IF Image

ICC/IF analysis of HT29 cells using GTX84685 Chk2 antibody [2F4].



### GTX84685 FCM Image

FACS analysis of HEK293T cells transfected with either Chk2 plasmid (Red) or empty vector control plasmid (Blue) using GTX84685 Chk2 antibody [2F4].



### GTX84685 WB Image

WB analysis of various samples using GTX84685 Chk2 antibody [2F4].

Loading : 10 ug per lane

Dilution : 1:200



For full product information, images and publications, please visit our [website](https://www.genetex.com).