

Chk2 antibody [5C4]

Cat. No. GTX84691

Host	Mouse
Clonality	Monoclonal
Isotype	IgG1
Applications	WB, ICC/IF, IHC-P, FCM, IP
Reactivity	Human, Dog

Package
100 µl

Applications

Application Note

*Optimal dilutions/concentrations should be determined by the researcher.

Suggested dilution	Recommended dilution
WB	1:500-1:1000
ICC/IF	1:50-1:100
IHC-P	1:150
FCM	1:100
IP	2ug/500ul

Not tested in other applications.

Calculated MW 61 kDa. ([Note](#))

Properties

Form	Liquid
Buffer	PBS, 1% BSA, 50% Glycerol
Preservative	0.02% Sodium azide
Storage	Store as concentrated solution. Centrifuge briefly prior to opening vial. For short-term storage (1-2 weeks), store at 4°C. For long-term storage, aliquot and store at -20°C or below. Avoid multiple freeze-thaw cycles.
Concentration	1.43 mg/ml (Please refer to the vial label for the specific concentration.)
Immunogen	Full length human recombinant protein of human CHEK2 (NP_009125) produced in HEK293T cell.
Purification	Purified by affinity chromatography
Conjugation	Unconjugated



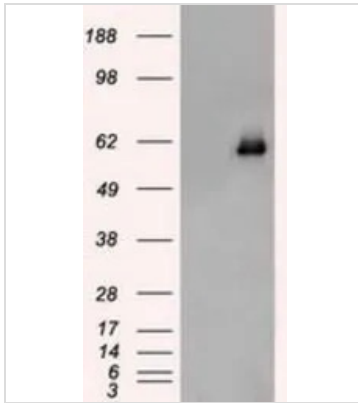
For full product information, images and publications, please visit our [website](#).

For laboratory research use only. Not for any clinical, therapeutic, or diagnostic use in humans or animals. Not for animal or human consumption.

Note

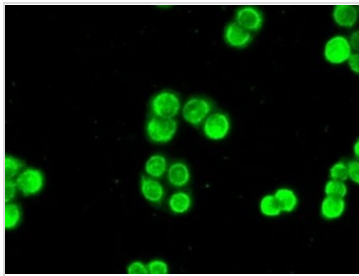
Purchasers shall not, and agree not to enable third parties to, analyze, copy, reverse engineer or otherwise attempt to determine the structure or sequence of the product.

DATA IMAGES

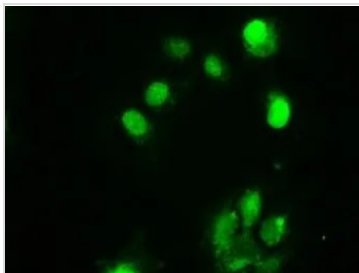
**GTX84691 WB Image**

WB analysis of HEK293T cells transfected with Chk2 plasmid (Right) or empty vector (Left) for 48 hrs using GTX84691 Chk2 antibody [5C4].

Loading : 5 ug per lane

**GTX84691 ICC/IF Image**

ICC/IF analysis of HT29 cells using GTX84691 Chk2 antibody [5C4].

**GTX84691 ICC/IF Image**

ICC/IF analysis of COS7 cells transiently transfected with Chk2 plasmid using GTX84691 Chk2 antibody [5C4].



For full product information, images and publications, please visit our [website](#).