

CDX2 antibody [1A3]

Cat. No. GTX84694

Host	Mouse
Clonality	Monoclonal
Isotype	IgG2a
Applications	WB
Reactivity	Human, Dog

Package
100 µl

Applications

Application Note

*Optimal dilutions/concentrations should be determined by the researcher.

Suggested dilution	Recommended dilution
WB	1:1000

Not tested in other applications.

Calculated MW 34 kDa. ([Note](#))

Properties

Form	Liquid
Buffer	PBS, 1% BSA, 50% Glycerol
Preservative	0.02% Sodium azide
Storage	Store as concentrated solution. Centrifuge briefly prior to opening vial. For short-term storage (1-2 weeks), store at 4°C. For long-term storage, aliquot and store at -20°C or below. Avoid multiple freeze-thaw cycles.
Concentration	1 mg/ml (Please refer to the vial label for the specific concentration.)
Immunogen	Recombinant protein expressed in E.coli corresponding to amino acids 1-313 of human CDX2
Purification	Purified by affinity chromatography From tissue culture supernatant
Conjugation	Unconjugated

Note

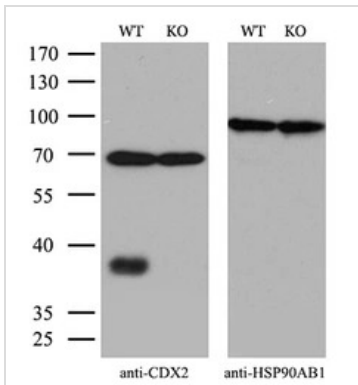
For laboratory research use only. Not for any clinical, therapeutic, or diagnostic use in humans or animals. Not for animal or human consumption.

Purchasers shall not, and agree not to enable third parties to, analyze, copy, reverse engineer or otherwise attempt to determine the structure or sequence of the product.



For full product information, images and publications, please visit our [website](#).

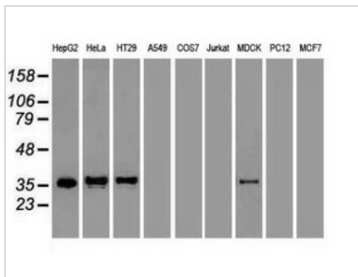
DATA IMAGES



GTX84694 WB Image

WB analysis of wild type and CDX2 knock out 293T cell lysate (10 µg per lane) using GTX84694 CDX2 antibody [1A3].

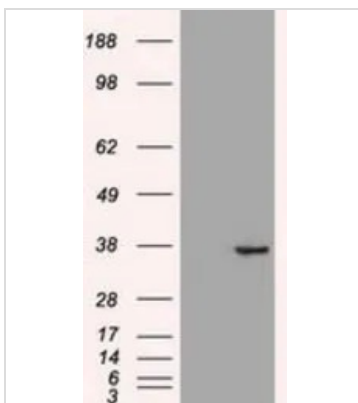
Dilution : 1:500



GTX84694 WB Image

WB analysis of various cell lines using GTX84694 CDX2 antibody [1A3].

Loading : 35 ug per lane



GTX84694 WB Image

WB analysis of HEK293T cells transfected with CDX2 plasmid (Right) or empty vector (Left) for 48 hrs using GTX84694 CDX2 antibody [1A3].

Loading : 5 ug per lane



For full product information, images and publications, please visit our [website](https://www.genetex.com).