

CD80 antibody [1E9]

Cat. No. GTX84698

| | |
|---------------------|-------------------------|
| Host | Mouse |
| Clonality | Monoclonal |
| Isotype | IgG1 |
| Applications | WB, ICC/IF, FCM |
| Reactivity | Human, Rat, Dog, Monkey |

Package
100 µl

Applications

Application Note

*Optimal dilutions/concentrations should be determined by the researcher.

| Suggested dilution | Recommended dilution |
|--------------------|----------------------|
| WB | 1:2000 |
| ICC/IF | 1:100 |
| FCM | 1:100 |

Not tested in other applications.

Calculated MW 33 kDa. ([Note](#))

Properties

| | |
|----------------------|--|
| Form | Liquid |
| Buffer | PBS, 1% BSA, 50% Glycerol |
| Preservative | 0.02% Sodium azide |
| Storage | Store as concentrated solution. Centrifuge briefly prior to opening vial. For short-term storage (1-2 weeks), store at 4°C. For long-term storage, aliquot and store at -20°C or below. Avoid multiple freeze-thaw cycles. |
| Concentration | 0.44 mg/ml (Please refer to the vial label for the specific concentration.) |
| Immunogen | Full length human recombinant protein of human CD80 (NP_005182) produced in HEK293T cell. |
| Purification | Purified by affinity chromatography |
| Conjugation | Unconjugated |

Note

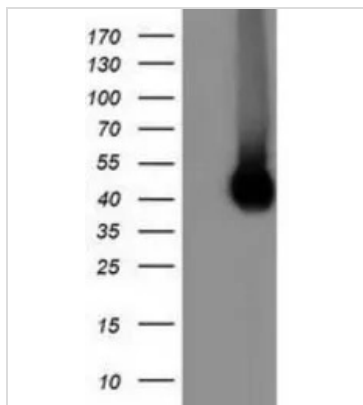
For laboratory research use only. Not for any clinical, therapeutic, or diagnostic use in humans or animals. Not for animal or human consumption.

Purchasers shall not, and agree not to enable third parties to, analyze, copy, reverse engineer or otherwise attempt to determine the structure or sequence of the product.



For full product information, images and publications, please visit our [website](#).

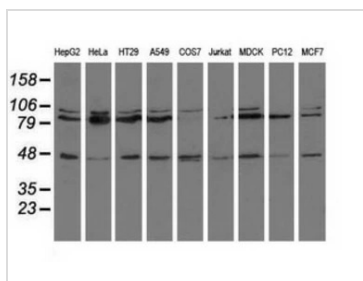
DATA IMAGES



GTX84698 WB Image

WB analysis of HEK293T cells transfected with CD80 plasmid (Right) or empty vector (Left) for 48 hrs using GTX84698 CD80 antibody [1E9].

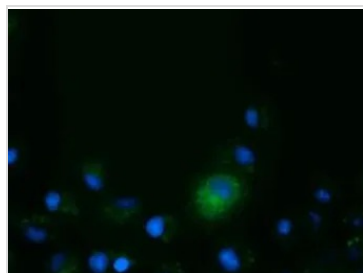
Loading : 5 ug per lane



GTX84698 WB Image

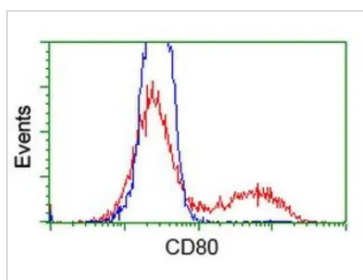
WB analysis of various cell lines using GTX84698 CD80 antibody [1E9].

Loading : 35 ug per lane



GTX84698 ICC/IF Image

ICC/IF analysis of COS7 cells transiently transfected with CD80 plasmid using GTX84698 CD80 antibody [1E9].



GTX84698 FCM Image

FACS analysis of HEK293T cells transfected with either CD80 plasmid(Red) or empty vector control plasmid(Blue) using GTX84698 CD80 antibody [1E9].



For full product information, images and publications, please visit our [website](#).