

CD2 antibody [4E4]

Cat. No. GTX84724

Host	Mouse
Clonality	Monoclonal
Isotype	IgG1
Applications	WB, IHC-P, FCM
Reactivity	Human, Mouse, Monkey

Package
100 µl

Applications

Application Note

*Optimal dilutions/concentrations should be determined by the researcher.

Suggested dilution	Recommended dilution
WB	1:2000
IHC-P	1:500
FCM	1:100

Not tested in other applications.

Calculated MW 39 kDa. ([Note](#))

Properties

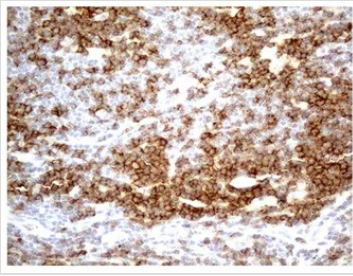
Form	Liquid
Buffer	PBS, 1% BSA, 50% Glycerol
Preservative	0.02% Sodium azide
Storage	Store as concentrated solution. Centrifuge briefly prior to opening vial. For short-term storage (1-2 weeks), store at 4°C. For long-term storage, aliquot and store at -20°C or below. Avoid multiple freeze-thaw cycles.
Concentration	0.6 mg/ml (Please refer to the vial label for the specific concentration.)
Immunogen	Full-length protein expressed in 293T cell transfected with human CD2 expression vector
Purification	Purified by affinity chromatography
Conjugation	Unconjugated

Note

For laboratory research use only. Not for any clinical, therapeutic, or diagnostic use in humans or animals. Not for animal or human consumption.

Purchasers shall not, and agree not to enable third parties to, analyze, copy, reverse engineer or otherwise attempt to determine the structure or sequence of the product.

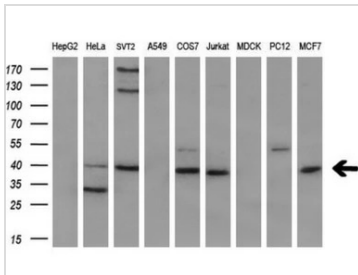
For full product information, images and publications, please visit our [website](#).

DATA IMAGES

GTx84724 IHC-P Image

IHC-P analysis of human lymphoma tissue using GTx84724 CD2 antibody [4E4].

Antigen retrieval : heat-induced antigen retrieval with 1mM EDTA in 10mM Tris buffer (pH8.5) at 120°C for 3 min.

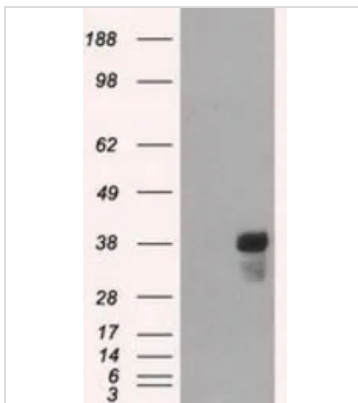
Dilution : 1:500


GTx84724 WB Image

WB analysis of various cell lines using GTx84724 CD2 antibody [4E4].

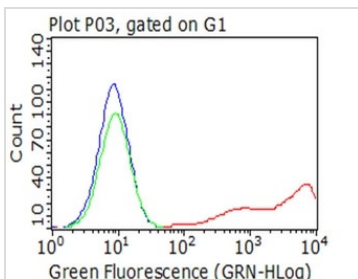
Loading : 35 ug per lane

Dilution : 1:200


GTx84724 WB Image

WB analysis of HEK293T cells transfected with CD2 plasmid (Right) or empty vector (Left) for 48 hrs using GTx84724 CD2 antibody [4E4].

Loading : 5 ug per lane


GTx84724 FCM Image

FACS analysis of Jurkat cells using GTx84724 CD2 antibody [4E4].

Red : Primary antibody

Black : Isotype control antibody

Dilution : 1:100



For full product information, images and publications, please visit our [website](https://www.genetex.com).