

## CaMKI delta antibody [2C6]

Cat. No. GTX84738

Host	Mouse
Clonality	Monoclonal
Isotype	IgG1
Application	WB, ICC/IF, IHC-P
Reactivity	Human

Package  
100 µl

## APPLICATION

## Application Note

\*Optimal dilutions/concentrations should be determined by the researcher.

Suggested dilution	Recommended dilution
WB	1:2000
ICC/IF	1:100
IHC-P	1:50

Not tested in other applications.

Calculated MW 43 kDa. ( [Note](#) )

## PROPERTIES

Form	Liquid
Buffer	PBS, 1% BSA, 50% Glycerol
Preservative	0.02% Sodium azide
Storage	Store as concentrated solution. Centrifuge briefly prior to opening vial. For short-term storage (1-2 weeks), store at 4°C. For long-term storage, aliquot and store at -20°C or below. Avoid multiple freeze-thaw cycles.
Concentration	1 mg/ml (Please refer to the vial label for the specific concentration.)
Immunogen	Full length human recombinant protein of human CAMK1D (NP_065130) produced in HEK293T cell.
Purification	Purified by affinity chromatography From tissue culture supernatant
Conjugation	Unconjugated

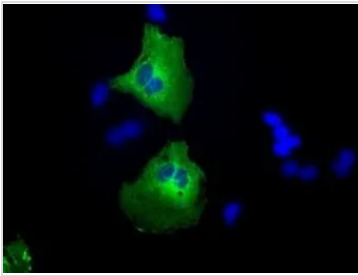
**Note** For laboratory research use only. Not for any clinical, therapeutic, or diagnostic use in humans or animals. Not for animal or human consumption.

Purchasers shall not, and agree not to enable third parties to, analyze, copy, reverse engineer or otherwise attempt to determine the structure or sequence of the product.



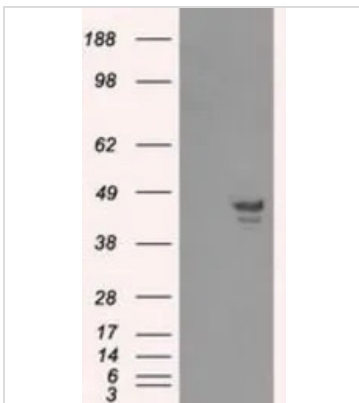
For full product information, images and publications, please visit our [website](#).

## DATA IMAGES



### GTX84738 ICC/IF Image

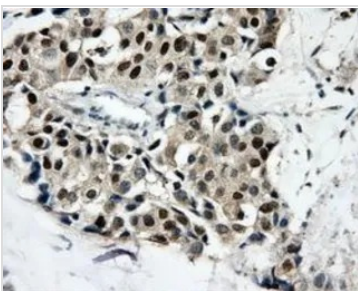
ICC/IF analysis of COS7 cells transiently transfected with CaMKI delta plasmid using GTX84738 CaMKI delta antibody [2C6].



### GTX84738 WB Image

WB analysis of HEK293T cells transfected with CaMKI delta plasmid (Right) or empty vector (Left) for 48 hrs using GTX84738 CaMKI delta antibody [2C6].

Loading : 5 ug per lane

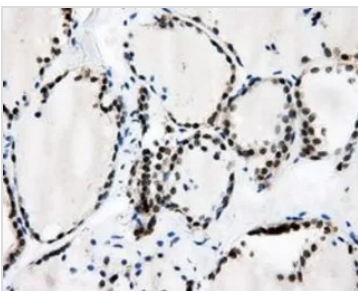


### GTX84738 IHC-P Image

IHC-P analysis of breast adenocarcinoma tissue using GTX84738 CaMKI delta antibody [2C6].

Antigen retrieval : Heat-induced epitope retrieval by 10mM citrate buffer, pH6.0, 100°C for 10min.

Dilution : 1:50



### GTX84738 IHC-P Image

IHC-P analysis of thyroid tissue using GTX84738 CaMKI delta antibody [2C6].

Antigen retrieval : Heat-induced epitope retrieval by 10mM citrate buffer, pH6.0, 100°C for 10min.

Dilution : 1:50



For full product information, images and publications, please visit our [website](https://www.genetex.com).