

BUB1B antibody [5D9]

Cat. No. GTX84771

Host	Mouse
Clonality	Monoclonal
Isotype	IgG1
Applications	WB, ICC/IF, IHC-P, IHC
Reactivity	Human, Monkey

References (1)

Package

100 µl

Applications

Application Note

*Optimal dilutions/concentrations should be determined by the researcher.

Suggested dilution	Recommended dilution
WB	1:2000
ICC/IF	1:100
IHC-P	1:50
IHC	Assay dependent

Not tested in other applications.

Calculated MW 120 kDa. ([Note](#))

Properties

Form	Liquid
Buffer	PBS, 1% BSA, 50% Glycerol
Preservative	0.02% Sodium azide
Storage	Store as concentrated solution. Centrifuge briefly prior to opening vial. For short-term storage (1-2 weeks), store at 4°C. For long-term storage, aliquot and store at -20°C or below. Avoid multiple freeze-thaw cycles.
Concentration	1.2 mg/ml (Please refer to the vial label for the specific concentration.)
Immunogen	Full-length protein expressed in 293T cell transfected with human BUB1B expression vector
Purification	Purified by affinity chromatography
Conjugation	Unconjugated

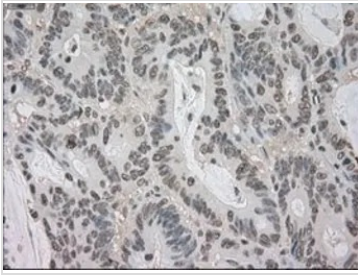
Note

For laboratory research use only. Not for any clinical, therapeutic, or diagnostic use in humans or animals. Not for animal or human consumption.

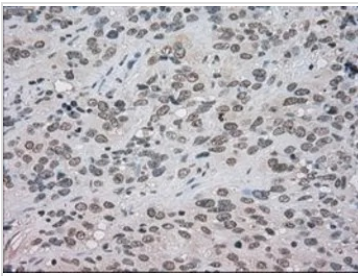
Purchasers shall not, and agree not to enable third parties to, analyze, copy, reverse engineer or otherwise attempt to determine the structure or sequence of the product.

For full product information, images and publications, please visit our [website](#).

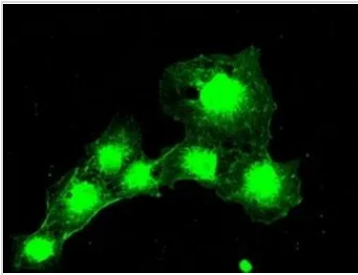
DATA IMAGES

**GTX84771 IHC-P Image**

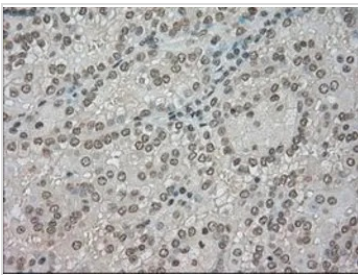
IHC-P analysis of colon adenocarcinoma tissue using GTX84771 BUB1B antibody [5D9].
Antigen retrieval : Heat-induced epitope retrieval by 10mM citrate buffer, pH6.0, 100°C for 10min.
Dilution : 1:50

**GTX84771 IHC-P Image**

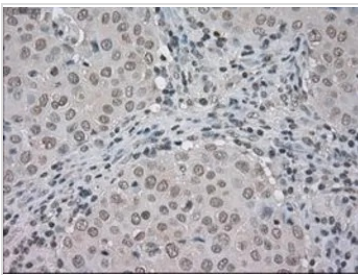
IHC-P analysis of bladder carcinoma tissue using GTX84771 BUB1B antibody [5D9].
Antigen retrieval : Heat-induced epitope retrieval by 10mM citrate buffer, pH6.0, 100°C for 10min.
Dilution : 1:50

**GTX84771 ICC/IF Image**

ICC/IF analysis of COS7 cells transiently transfected with BUB1B plasmid using GTX84771 BUB1B antibody [5D9].

**GTX84771 IHC-P Image**

IHC-P analysis of kidney carcinoma tissue using GTX84771 BUB1B antibody [5D9].
Antigen retrieval : Heat-induced epitope retrieval by 10mM citrate buffer, pH6.0, 100°C for 10min.
Dilution : 1:50

**GTX84771 IHC-P Image**

IHC-P analysis of breast adenocarcinoma tissue using GTX84771 BUB1B antibody [5D9].
Antigen retrieval : Heat-induced epitope retrieval by 10mM citrate buffer, pH6.0, 100°C for 10min.
Dilution : 1:50



For full product information, images and publications, please visit our [website](#).