

## BTN3A2 antibody [1A6]

Cat. No. GTX84773

Host	Mouse
Clonality	Monoclonal
Isotype	IgG1
Applications	WB, ICC/IF, IHC-P
Reactivity	Human

Package  
100 µl

## Applications

## Application Note

\*Optimal dilutions/concentrations should be determined by the researcher.

Suggested dilution	Recommended dilution
WB	1:2000
ICC/IF	1:100
IHC-P	1:50

Not tested in other applications.

Calculated MW 36 kDa. ( [Note](#) )

## Properties

Form	Liquid
Buffer	PBS, 1% BSA, 50% Glycerol
Preservative	0.02% Sodium azide
Storage	Store as concentrated solution. Centrifuge briefly prior to opening vial. For short-term storage (1-2 weeks), store at 4°C. For long-term storage, aliquot and store at -20°C or below. Avoid multiple freeze-thaw cycles.
Concentration	1 mg/ml (Please refer to the vial label for the specific concentration.)
Immunogen	Full length human recombinant protein of human BTN3A2 (NP_008978) produced in HEK293T cell.
Purification	Purified by affinity chromatography From tissue culture supernatant
Conjugation	Unconjugated

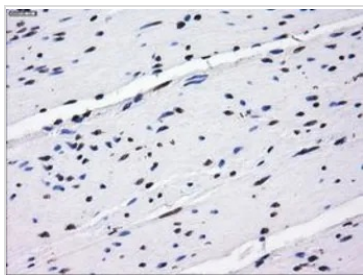
## Note

For laboratory research use only. Not for any clinical, therapeutic, or diagnostic use in humans or animals. Not for animal or human consumption.

Purchasers shall not, and agree not to enable third parties to, analyze, copy, reverse engineer or otherwise attempt to determine the structure or sequence of the product.



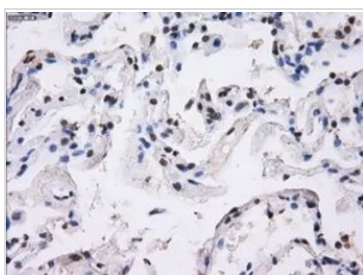
For full product information, images and publications, please visit our [website](#).

**DATA IMAGES**

**GTX84773 IHC-P Image**

IHC-P analysis of colon tissue using GTX84773 BTN3A2 antibody [1A6].

Antigen retrieval : Heat-induced epitope retrieval by 10mM citrate buffer, pH6.0, 100°C for 10min.

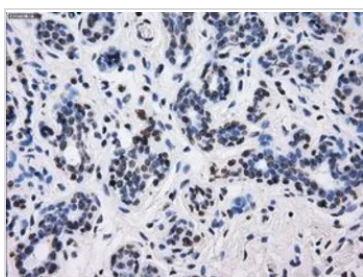
Dilution : 1:50


**GTX84773 IHC-P Image**

IHC-P analysis of lung tissue using GTX84773 BTN3A2 antibody [1A6].

Antigen retrieval : Heat-induced epitope retrieval by 10mM citrate buffer, pH6.0, 100°C for 10min.

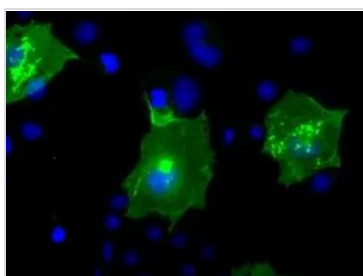
Dilution : 1:50


**GTX84773 IHC-P Image**

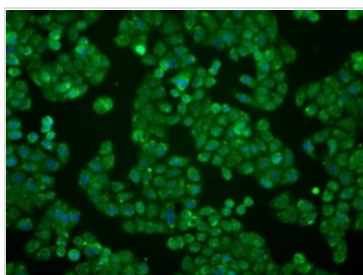
IHC-P analysis of breast tissue using GTX84773 BTN3A2 antibody [1A6].

Antigen retrieval : Heat-induced epitope retrieval by 10mM citrate buffer, pH6.0, 100°C for 10min.

Dilution : 1:50


**GTX84773 ICC/IF Image**

ICC/IF analysis of COS7 cells transiently transfected with BTN3A2 plasmid using GTX84773 BTN3A2 antibody [1A6].


**GTX84773 ICC/IF Image**

ICC/IF analysis of HT29 cells using GTX84773 BTN3A2 antibody [1A6].



For full product information, images and publications, please visit our [website](https://www.genetex.com).