

## BTN1A1 antibody [7B5]

**Cat. No. GTX84781**

<b>Host</b>	Mouse
<b>Clonality</b>	Monoclonal
<b>Isotype</b>	IgG2a
<b>Applications</b>	WB, ICC/IF, IHC-P, FCM
<b>Reactivity</b>	Human, Dog

**Package**  
100 µl

## Applications

**Application Note**

\*Optimal dilutions/concentrations should be determined by the researcher.

Suggested dilution	Recommended dilution
WB	1:200-1:500
ICC/IF	1:100
IHC-P	1:150
FCM	1:100

Not tested in other applications.

**Calculated MW** 59 kDa. ([Note](#))

## Properties

<b>Form</b>	Liquid
<b>Buffer</b>	PBS, 1% BSA, 50% Glycerol
<b>Preservative</b>	0.02% Sodium azide
<b>Storage</b>	Store as concentrated solution. Centrifuge briefly prior to opening vial. For short-term storage (1-2 weeks), store at 4°C. For long-term storage, aliquot and store at -20°C or below. Avoid multiple freeze-thaw cycles.
<b>Concentration</b>	0.58 mg/ml (Please refer to the vial label for the specific concentration.)
<b>Immunogen</b>	Full length human recombinant protein of human BTN1A1 (NP_001723) produced in HEK293T cell.
<b>Purification</b>	Purified by affinity chromatography
<b>Conjugation</b>	Unconjugated

**Note**

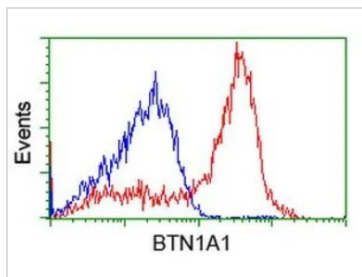
For laboratory research use only. Not for any clinical, therapeutic, or diagnostic use in humans or animals. Not for animal or human consumption.

Purchasers shall not, and agree not to enable third parties to, analyze, copy, reverse engineer or otherwise attempt to determine the structure or sequence of the product.

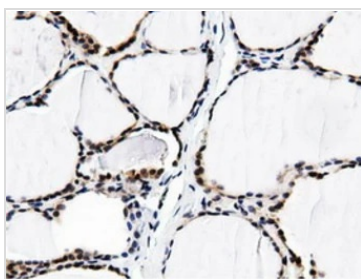


For full product information, images and publications, please visit our [website](#).

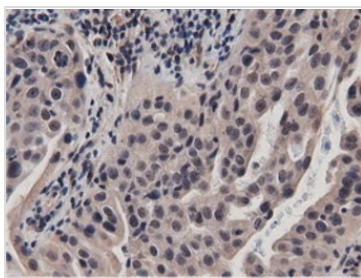
## DATA IMAGES

**GTX84781 FCM Image**

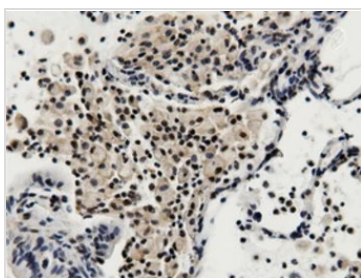
FACS analysis of HEK293T cells transfected with either BTN1A1 plasmid(Red) or empty vector control plasmid(Blue) using GTX84781 BTN1A1 antibody [7B5].

**GTX84781 IHC-P Image**

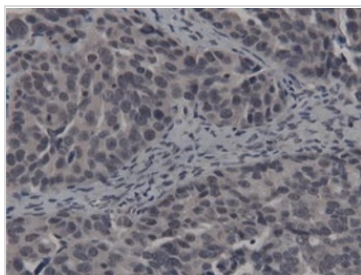
IHC-P analysis of human thyroid tissue using GTX84781 BTN1A1 antibody [7B5].  
Antigen retrieval : Heat-induced epitope retrieval by 10mM citrate buffer, pH6.0, 100°C for 10min.

**GTX84781 IHC-P Image**

IHC-P analysis of human bladder carcinoma tissue using GTX84781 BTN1A1 antibody [7B5].  
Antigen retrieval : Heat-induced epitope retrieval by 10mM citrate buffer, pH6.0, 100°C for 10min.

**GTX84781 IHC-P Image**

IHC-P analysis of human lung carcinoma tissue using GTX84781 BTN1A1 antibody [7B5].  
Antigen retrieval : Heat-induced epitope retrieval by 10mM citrate buffer, pH6.0, 100°C for 10min.

**GTX84781 IHC-P Image**

IHC-P analysis of human ovary adenocarcinoma tissue using GTX84781 BTN1A1 antibody [7B5].  
Antigen retrieval : Heat-induced epitope retrieval by 10mM citrate buffer, pH6.0, 100°C for 10min.



For full product information, images and publications, please visit our [website](#).