

BTK antibody [10E10]

Cat. No. GTX84785

Host	Mouse
Clonality	Monoclonal
Isotype	IgG2a
Applications	WB, ICC/IF, IHC-P, FCM
Reactivity	Human, Mouse

References (1)

Package

100 µl

Applications

Application Note

*Optimal dilutions/concentrations should be determined by the researcher.

Suggested dilution	Recommended dilution
WB	1:2000
ICC/IF	1:100
IHC-P	1:50
FCM	Assay dependent

Not tested in other applications.

Calculated MW 76 kDa. ([Note](#))

Properties

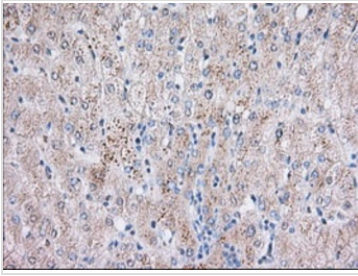
Form	Liquid
Buffer	PBS, 1% BSA, 50% Glycerol
Preservative	0.02% Sodium azide
Storage	Store as concentrated solution. Centrifuge briefly prior to opening vial. For short-term storage (1-2 weeks), store at 4°C. For long-term storage, aliquot and store at -20°C or below. Avoid multiple freeze-thaw cycles.
Concentration	0.87 mg/ml (Please refer to the vial label for the specific concentration.)
Immunogen	Full length human recombinant protein of human BTK (NP_000052) produced in HEK293T cell.
Purification	Purified by affinity chromatography
Conjugation	Unconjugated

Note

For laboratory research use only. Not for any clinical, therapeutic, or diagnostic use in humans or animals. Not for animal or human consumption.

Purchasers shall not, and agree not to enable third parties to, analyze, copy, reverse engineer or otherwise attempt to determine the structure or sequence of the product.

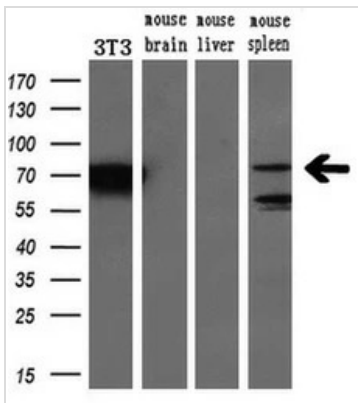
For full product information, images and publications, please visit our [website](#).

DATA IMAGES

GTX84785 IHC-P Image

IHC-P analysis of human liver tissue using GTX84785 BTK antibody [10E10].

Antigen retrieval : Heat-induced epitope retrieval by 10mM citrate buffer, pH6.0, 100°C for 10min.

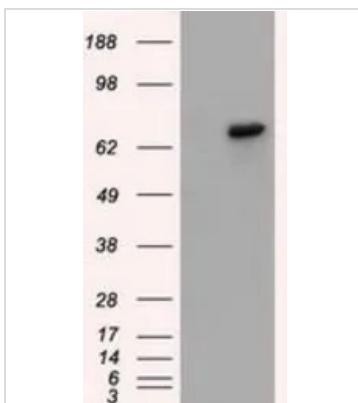
Dilution : 1:50


GTX84785 WB Image

WB analysis of various samples using GTX84785 BTK antibody [10E10].

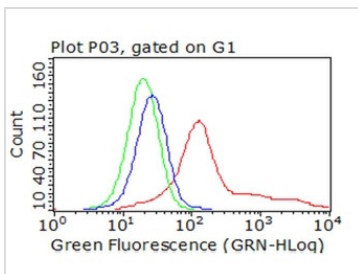
Loading : 10 ug per lane

Dilution : 1:200


GTX84785 WB Image

WB analysis of HEK293T cells transfected with BTK plasmid (Right) or empty vector (Left) for 48 hrs using GTX84785 BTK antibody [10E10].

Loading : 5 ug per lane


GTX84785 FCM Image

FACS analysis of monocytes from non-XLA or XLA patients using GTX84785 BTK antibody [10E10].



For full product information, images and publications, please visit our [website](https://www.genetex.com).