

CD147 antibody [9H5]

Cat. No. GTX84801

Host	Mouse
Clonality	Monoclonal
Isotype	IgG2b
Applications	WB, ICC/IF, IHC-P, FCM
Reactivity	Human, Mouse, Rat, Dog, Monkey

References (2)

Package

100 µl

Applications

Application Note

*Optimal dilutions/concentrations should be determined by the researcher.

Suggested dilution	Recommended dilution
WB	1:200-1:1000
ICC/IF	1:100
IHC-P	1:50
FCM	1:100

Not tested in other applications.

Calculated MW 42 kDa. ([Note](#))

Properties

Form	Liquid
Buffer	PBS, 1% BSA, 50% Glycerol
Preservative	0.02% Sodium azide
Storage	Store as concentrated solution. Centrifuge briefly prior to opening vial. For short-term storage (1-2 weeks), store at 4°C. For long-term storage, aliquot and store at -20°C or below. Avoid multiple freeze-thaw cycles.
Concentration	0.64 mg/ml (Please refer to the vial label for the specific concentration.)
Immunogen	Full length human recombinant protein of human BSG(NP_001719) produced in HEK293T cell.
Purification	Purified by affinity chromatography
Conjugation	Unconjugated

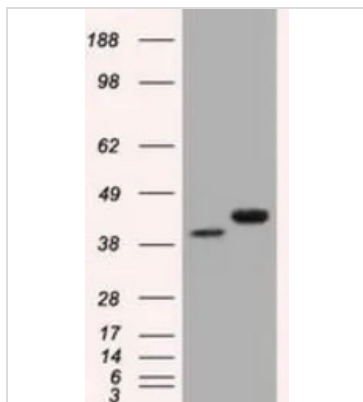
Note

For laboratory research use only. Not for any clinical, therapeutic, or diagnostic use in humans or animals. Not for animal or human consumption.

Purchasers shall not, and agree not to enable third parties to, analyze, copy, reverse engineer or otherwise attempt to determine the structure or sequence of the product.

For full product information, images and publications, please visit our [website](#).

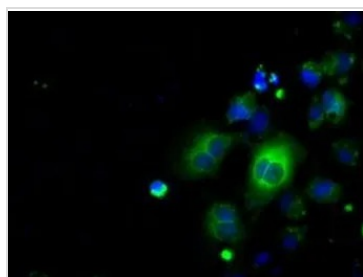
DATA IMAGES



GTX84801 WB Image

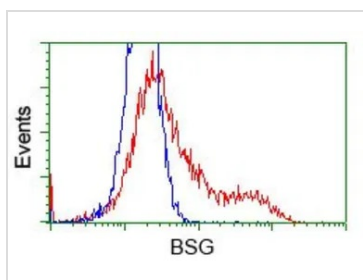
WB analysis of HEK293T cells transfected with CD147 plasmid (Right) or empty vector (Left) for 48 hrs using GTX84801 CD147 antibody [9H5].

Loading : 5 ug per lane



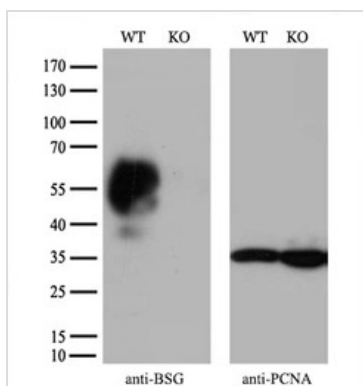
GTX84801 ICC/IF Image

ICC/IF analysis of COS7 cells transiently transfected with CD147 plasmid using GTX84801 CD147 antibody [9H5].



GTX84801 FCM Image

FACS analysis of HEK293T cells transfected with either CD147 plasmid (Red) or empty vector control plasmid (Blue) using GTX84801 CD147 antibody [9H5].



GTX84801 WB Image

WB analysis of wild type and CD147 knock out 293T cell lysate (10µg per lane) using GTX84801 CD147 antibody [9H5].

Dilution : 1:2000



For full product information, images and publications, please visit our [website](#).