

## B-Raf antibody [4B2]

Cat. No. GTX84814

<b>Host</b>	Mouse
<b>Clonality</b>	Monoclonal
<b>Isotype</b>	IgG2a
<b>Applications</b>	WB, IP, ELISA
<b>Reactivity</b>	Human, Monkey

Package  
100 µl

## Applications

## Application Note

\*Optimal dilutions/concentrations should be determined by the researcher.

Suggested dilution	Recommended dilution
WB	1:2000
IP	Assay dependent
ELISA	Assay dependent

Not tested in other applications.

**Calculated MW** 84 kDa. ([Note](#))

## Properties

<b>Form</b>	Liquid
<b>Buffer</b>	PBS, 1% BSA, 50% Glycerol
<b>Preservative</b>	0.02% Sodium azide
<b>Storage</b>	Store as concentrated solution. Centrifuge briefly prior to opening vial. For short-term storage (1-2 weeks), store at 4°C. For long-term storage, aliquot and store at -20°C or below. Avoid multiple freeze-thaw cycles.
<b>Concentration</b>	1.4 mg/ml (Please refer to the vial label for the specific concentration.)
<b>Immunogen</b>	Full-length protein expressed in 293T cell transfected with human BRAF expression vector
<b>Purification</b>	Purified by affinity chromatography
<b>Conjugation</b>	Unconjugated

## Note

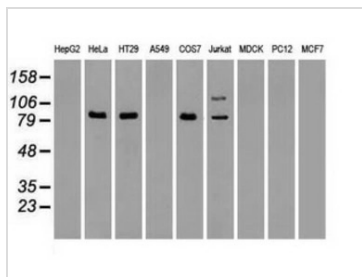
For laboratory research use only. Not for any clinical, therapeutic, or diagnostic use in humans or animals. Not for animal or human consumption.

Purchasers shall not, and agree not to enable third parties to, analyze, copy, reverse engineer or otherwise attempt to determine the structure or sequence of the product.



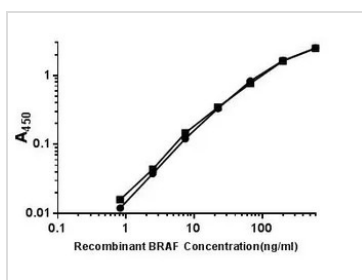
For full product information, images and publications, please visit our [website](#).

DATA IMAGES



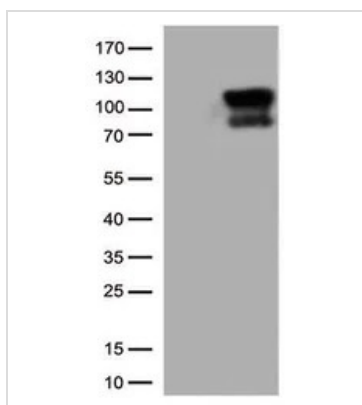
**GTX84814 WB Image**

WB analysis of various cell lines using GTX84814 B-Raf antibody [4B2].  
Loading : 35 ug per lane



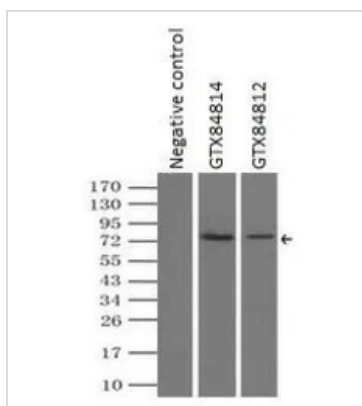
**GTX84814 ELISA Image**

Sandwich ELISA analysis of BRAF recombinant protein (dilution range from 0.8ng/ml to 600ng/ml) using GTX84820 B-Raf antibody [4A5] (capture antibody) at 5ug/ml and HRP conjugated GTX84814 B-Raf antibody [4B2] (detection antibody) at 0.03ug/ml.



**GTX84814 WB Image**

WB analysis of HEK293T cells transfected with B-Raf plasmid (Right) or empty vector (Left) for 48 hrs using GTX84814 B-Raf antibody [4B2].  
Loading : 5 ug per lane



**GTX84814 IP Image**

IP analysis of DDDDK tagged B-Raf overexpressed HEK293T lysate using GTX84814 B-Raf antibody [4B2]. After extensive wash to remove any non-specific binding, the immuno-precipitated products were analyzed with rabbit anti-DDDDK polyclonal antibody.  
IP reaction : 2µg antibody / 500µl cell lysate



For full product information, images and publications, please visit our [website](#).