

## Survivin antibody [2D9]

Cat. No. GTX84824

Host	Mouse
Clonality	Monoclonal
Isotype	IgG1
Applications	WB, ICC/IF, IHC-P, FCM
Reactivity	Human

Package  
100 µl

## Applications

## Application Note

\*Optimal dilutions/concentrations should be determined by the researcher.

Suggested dilution	Recommended dilution
WB	1:1000-1:2000
ICC/IF	1:100
IHC-P	Assay dependent
FCM	1:100

Not tested in other applications.

Calculated MW 16 kDa. ( [Note](#) )

## Properties

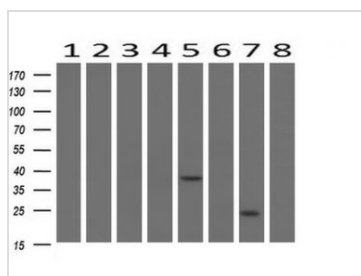
Form	Liquid
Buffer	PBS, 1% BSA, 50% Glycerol
Preservative	0.02% Sodium azide
Storage	Store as concentrated solution. Centrifuge briefly prior to opening vial. For short-term storage (1-2 weeks), store at 4°C. For long-term storage, aliquot and store at -20°C or below. Avoid multiple freeze-thaw cycles.
Concentration	1 mg/ml (Please refer to the vial label for the specific concentration.)
Immunogen	Full length human recombinant protein of human BIRC5 (NP_001159) produced in HEK293T cell.
Purification	Purified by affinity chromatography From tissue culture supernatant
Conjugation	Unconjugated

For full product information, images and publications, please visit our [website](#).

For laboratory research use only. Not for any clinical, therapeutic, or diagnostic use in humans or animals. Not for animal or human consumption.

**Note**

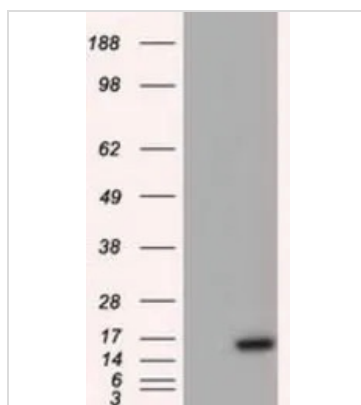
Purchasers shall not, and agree not to enable third parties to, analyze, copy, reverse engineer or otherwise attempt to determine the structure or sequence of the product.

**DATA IMAGES**

**GTx84824 WB Image**

WB analysis of human tissues (Lane 1-Testis ; Lane 2-Uterus ; Lane 3-Breast ; Lane 4-Brain ; Lane 5-Liver ; Lane 6-Ovary ; Lane 7-Thyroid gland ; Lane 8-colon) using GTx84824 Survivin antibody [2D9].

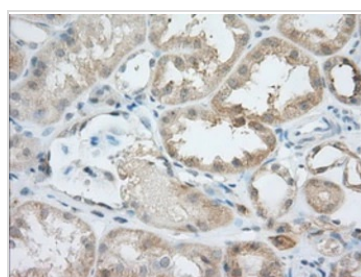
Loading : 10 ug per lane

Dilution : 1:200


**GTx84824 WB Image**

WB analysis of HEK293T cells transfected with Survivin plasmid (Right) or empty vector (Left) for 48 hrs using GTx84824 Survivin antibody [2D9].

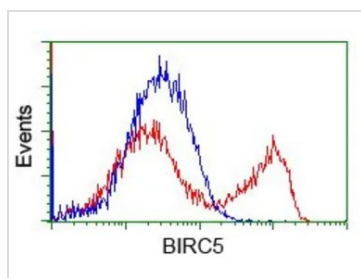
Loading : 5 ug per lane


**GTx84824 IHC-P Image**

IHC-P analysis of human kidney tissue using GTx84824 Survivin antibody [2D9].

Antigen retrieval : Heat-induced epitope retrieval by 1mM EDTA in 10mM Tris, pH9.0, 120°C for 3min.

Dilution : 1:50


**GTx84824 FCM Image**

FACS analysis of HEK293T cells transfected with either Survivin plasmid(Red) or empty vector control plasmid(Blue) using GTx84824 Survivin antibody [2D9].



For full product information, images and publications, please visit our [website](http://www.genetex.com).