

## BCKDK antibody [11C9]

**Cat. No. GTX84836**

<b>Host</b>	Mouse
<b>Clonality</b>	Monoclonal
<b>Isotype</b>	IgG1
<b>Applications</b>	WB, ICC/IF, IHC-P
<b>Reactivity</b>	Human

**Package**  
100 µl

## Applications

**Application Note**

\*Optimal dilutions/concentrations should be determined by the researcher.

Suggested dilution	Recommended dilution
WB	1:1000
ICC/IF	1:100
IHC-P	1:50

Not tested in other applications.

**Calculated MW** 46 kDa. ([Note](#))

## Properties

<b>Form</b>	Liquid
<b>Buffer</b>	PBS, 1% BSA, 50% Glycerol
<b>Preservative</b>	0.02% Sodium azide
<b>Storage</b>	Store as concentrated solution. Centrifuge briefly prior to opening vial. For short-term storage (1-2 weeks), store at 4°C. For long-term storage, aliquot and store at -20°C or below. Avoid multiple freeze-thaw cycles.
<b>Concentration</b>	0.8 mg/ml (Please refer to the vial label for the specific concentration.)
<b>Immunogen</b>	Full length human recombinant protein of human BCKDK (NP_005872) produced in HEK293T cell.
<b>Purification</b>	Purified by affinity chromatography
<b>Conjugation</b>	Unconjugated

**Note**

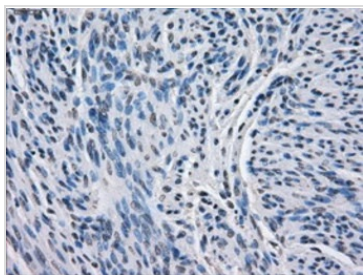
For laboratory research use only. Not for any clinical, therapeutic, or diagnostic use in humans or animals. Not for animal or human consumption.

Purchasers shall not, and agree not to enable third parties to, analyze, copy, reverse engineer or otherwise attempt to determine the structure or sequence of the product.

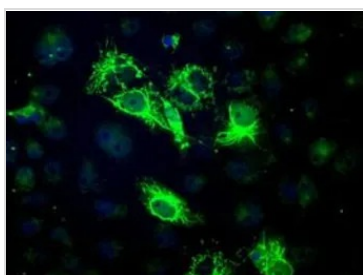


For full product information, images and publications, please visit our [website](#).

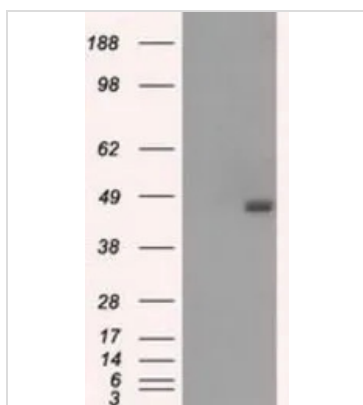
## DATA IMAGES

**GTX84836 IHC-P Image**

IHC-P analysis of human endometrium tissue using GTX84836 BCKDK antibody [11C9].  
Antigen retrieval : Heat-induced epitope retrieval by 10mM citrate buffer, pH6.0, 100°C for 10min.

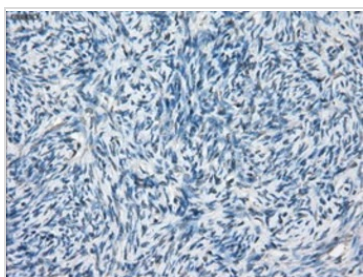
**GTX84836 ICC/IF Image**

ICC/IF analysis of COS7 cells transiently transfected with BCKDK plasmid using GTX84836 BCKDK antibody [11C9].

**GTX84836 WB Image**

WB analysis of HEK293T cells transfected with BCKDK plasmid (Right) or empty vector (Left) for 48 hrs using GTX84836 BCKDK antibody [11C9].

Loading : 5 ug per lane

**GTX84836 IHC-P Image**

IHC-P analysis of human ovary tissue using GTX84836 BCKDK antibody [11C9].  
Antigen retrieval : Heat-induced epitope retrieval by 10mM citrate buffer, pH6.0, 100°C for 10min.



For full product information, images and publications, please visit our [website](#).