

BMAL1 antibody [1D1]

Cat. No. GTX84853

Host	Mouse
Clonality	Monoclonal
Isotype	IgG1
Application	WB, ICC/IF, FACS, IHC
Reactivity	Human

Package
100 µl

APPLICATION

Application Note

*Optimal dilutions/concentrations should be determined by the researcher.

Suggested dilution	Recommended dilution
WB	1:200
ICC/IF	1:100
FACS	1:100
IHC	Assay dependent

Not tested in other applications.

Calculated MW 69 kDa. ([Note](#))

PROPERTIES

Form	Liquid
Buffer	PBS, 1% BSA, 50% Glycerol
Preservative	0.02% Sodium azide
Storage	Store as concentrated solution. Centrifuge briefly prior to opening vial. For short-term storage (1-2 weeks), store at 4°C. For long-term storage, aliquot and store at -20°C or below. Avoid multiple freeze-thaw cycles.
Concentration	1 mg/ml (Please refer to the vial label for the specific concentration.)
Immunogen	Full length human recombinant protein of human ARNTL (NP_001169) produced in HEK293T cell.
Purification	Purified by affinity chromatography From tissue culture supernatant
Conjugation	Unconjugated



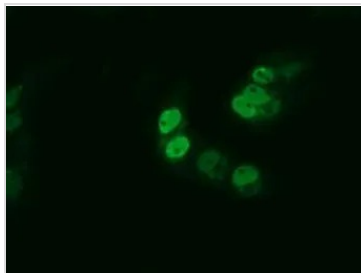
For full product information, images and publications, please visit our [website](#).

For laboratory research use only. Not for any clinical, therapeutic, or diagnostic use in humans or animals. Not for animal or human consumption.

Note

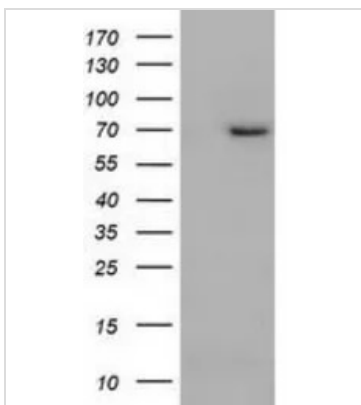
Purchasers shall not, and agree not to enable third parties to, analyze, copy, reverse engineer or otherwise attempt to determine the structure or sequence of the product.

DATA IMAGES



GTx84853 ICC/IF Image

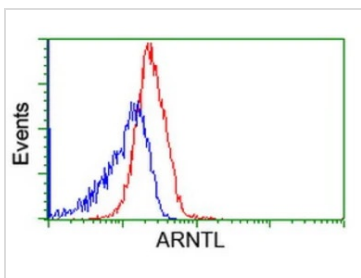
ICC/IF analysis of COS7 cells transiently transfected with BMAL1 plasmid using GTx84853 BMAL1 antibody [1D1].



GTx84853 WB Image

WB analysis of HEK293T cells transfected with BMAL1 plasmid (Right) or empty vector (Left) for 48 hrs using GTx84853 BMAL1 antibody [1D1].

Loading : 5 ug per lane

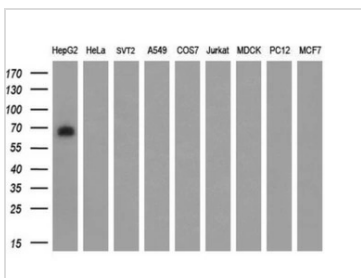


GTx84853 FACS Image

FACS analysis of Jurkat cells using GTx84853 BMAL1 antibody [1D1].

Red : Primary antibody

Blue : Negative control antibody



GTx84853 WB Image

WB analysis of various cell lines using GTx84853 BMAL1 antibody [1D1].

Loading : 35 ug per lane

Dilution : 1:200



For full product information, images and publications, please visit our [website](#).