

Rho GDI alpha antibody [1F2]

Cat. No. GTX84859

Host	Mouse
Clonality	Monoclonal
Isotype	IgG1
Applications	WB, FCM
Reactivity	Human, Rat, Dog, Monkey

Package
100 µl

Applications

Application Note

*Optimal dilutions/concentrations should be determined by the researcher.

Suggested dilution	Recommended dilution
WB	1:2000
FCM	1:100

Not tested in other applications.

Calculated MW 23 kDa. ([Note](#))

Properties

Form	Liquid
Buffer	PBS, 1% BSA, 50% Glycerol
Preservative	0.02% Sodium azide
Storage	Store as concentrated solution. Centrifuge briefly prior to opening vial. For short-term storage (1-2 weeks), store at 4°C. For long-term storage, aliquot and store at -20°C or below. Avoid multiple freeze-thaw cycles.
Concentration	1 mg/ml (Please refer to the vial label for the specific concentration.)
Immunogen	Full length human recombinant protein of human ARHGDI (NP_004300) produced in HEK293T cell.
Purification	Purified by affinity chromatography From tissue culture supernatant
Conjugation	Unconjugated

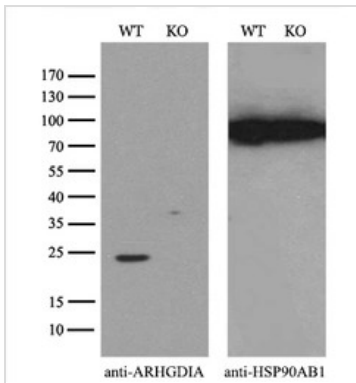
Note

For laboratory research use only. Not for any clinical, therapeutic, or diagnostic use in humans or animals. Not for animal or human consumption.

Purchasers shall not, and agree not to enable third parties to, analyze, copy, reverse engineer or otherwise attempt to determine the structure or sequence of the product.

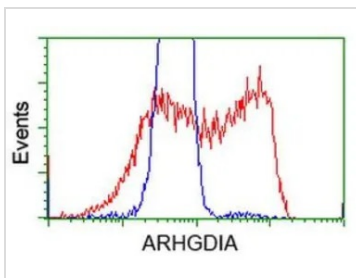


For full product information, images and publications, please visit our [website](#).

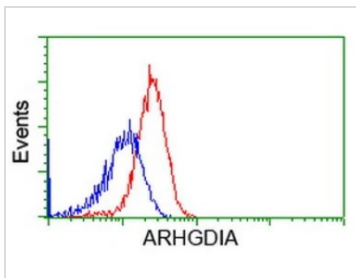
DATA IMAGES

GTX84859 WB Image

WB analysis of wild type and Rho GDI alpha knock out 293T cell lysate(10μg per lane) using GTX84859 Rho GDI alpha antibody [1F2].

Dilution : 1:500


GTX84859 FCM Image

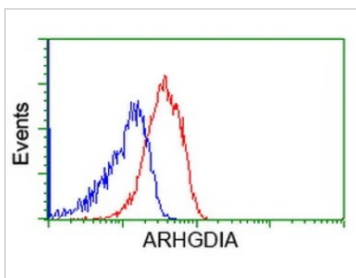
FACS analysis of HEK293T cells transfected with either Rho GDI alpha plasmid(Red) or empty vector control plasmid(Blue) using GTX84859 Rho GDI alpha antibody [1F2].


GTX84859 FCM Image

FACS analysis of HeLa cells using GTX84859 Rho GDI alpha antibody [1F2].

Red : Primary antibody

Blue : Negative control antibody


GTX84859 FCM Image

FACS analysis of Jurkat cells using GTX84859 Rho GDI alpha antibody [1F2].

Red : Primary antibody

Blue : Negative control antibody



For full product information, images and publications, please visit our [website](https://www.genetex.com).