

Annexin XI antibody [1C6]

Cat. No. GTX84884

Host	Mouse
Clonality	Monoclonal
Isotype	IgG1
Application	WB, ICC/IF, FACS, IP
Reactivity	Human, Monkey

★★★★★ Review (2)

Package
100 µl

APPLICATION

Application Note

*Optimal dilutions/concentrations should be determined by the researcher.

Suggested dilution	Recommended dilution
WB	1:200
ICC/IF	Assay dependent
FACS	Assay dependent
IP	Assay dependent

Not tested in other applications.

Calculated MW 54 kDa. ([Note](#))

PROPERTIES

Form	Liquid
Buffer	PBS, 1% BSA, 50% Glycerol
Preservative	0.02% Sodium azide
Storage	Store as concentrated solution. Centrifuge briefly prior to opening vial. For short-term storage (1-2 weeks), store at 4°C. For long-term storage, aliquot and store at -20°C or below. Avoid multiple freeze-thaw cycles.
Concentration	1 mg/ml (Please refer to the vial label for the specific concentration.)
Immunogen	Full length human recombinant protein of human ANXA11 (NP_001148) produced in HEK293T cell.
Purification	Purified by affinity chromatography From tissue culture supernatant
Conjugation	Unconjugated

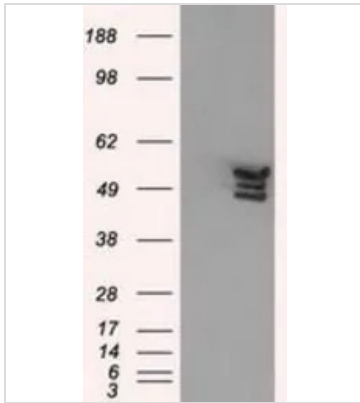


For full product information, images and publications, please visit our [website](#).

For laboratory research use only. Not for any clinical, therapeutic, or diagnostic use in humans or animals. Not for animal or human consumption.

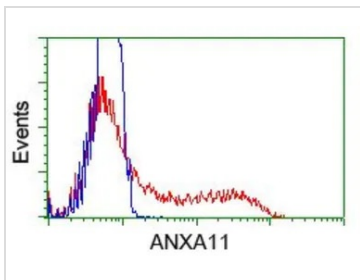
Note

Purchasers shall not, and agree not to enable third parties to, analyze, copy, reverse engineer or otherwise attempt to determine the structure or sequence of the product.

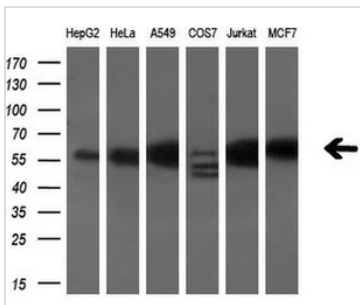
DATA IMAGES

GTx84884 WB Image

WB analysis of HEK293T cells transfected with Annexin XI plasmid (Right) or empty vector (Left) for 48 hrs using GTx84884 Annexin XI antibody [1C6].

Loading : 5 ug per lane


GTx84884 FACS Image

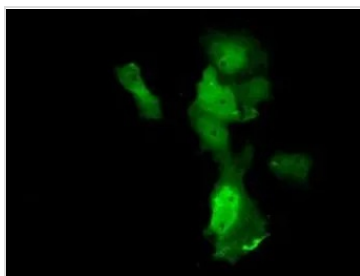
FACS analysis of HEK293T cells transfected with either Annexin XI plasmid(Red) or empty vector control plasmid(Blue) using GTx84884 Annexin XI antibody [1C6].


GTx84884 WB Image

WB analysis of various cell lines using GTx84884 Annexin XI antibody [1C6].

Loading : 10 ug per lane

Dilution : 1:200


GTx84884 ICC/IF Image

ICC/IF analysis of COS7 cells transiently transfected with Annexin XI plasmid using GTx84884 Annexin XI antibody [1C6].



For full product information, images and publications, please visit our [website](https://www.genetex.com).