

ALDH1L1 antibody [6A10]

Cat. No. GTX84891

Host	Mouse
Clonality	Monoclonal
Isotype	IgG1
Applications	WB, IHC-P, FCM
Reactivity	Human, Dog

Package
100 µl

Applications

Application Note

*Optimal dilutions/concentrations should be determined by the researcher.

Suggested dilution	Recommended dilution
WB	1:2000
IHC-P	Assay dependent
FCM	1:100

Not tested in other applications.

Calculated MW 99 kDa. ([Note](#))

Properties

Form	Liquid
Buffer	PBS, 1% BSA, 50% Glycerol
Preservative	0.02% Sodium azide
Storage	Store as concentrated solution. Centrifuge briefly prior to opening vial. For short-term storage (1-2 weeks), store at 4°C. For long-term storage, aliquot and store at -20°C or below. Avoid multiple freeze-thaw cycles.
Concentration	0.69 mg/ml (Please refer to the vial label for the specific concentration.)
Immunogen	Full length human recombinant protein of human ALDH1L1 (NP_036322) produced in HEK293T cell.
Purification	Purified by affinity chromatography
Conjugation	Unconjugated

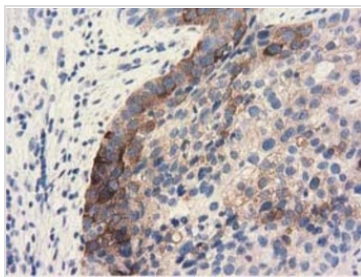
Note

For laboratory research use only. Not for any clinical, therapeutic, or diagnostic use in humans or animals. Not for animal or human consumption.

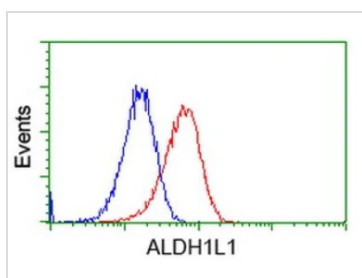
Purchasers shall not, and agree not to enable third parties to, analyze, copy, reverse engineer or otherwise attempt to determine the structure or sequence of the product.



For full product information, images and publications, please visit our [website](#).

DATA IMAGES

GTX84891 IHC-P Image

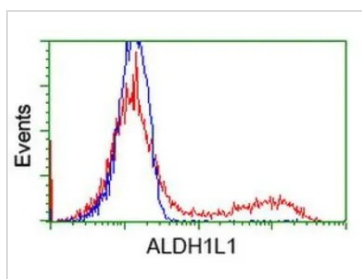
IHC-P analysis of human bladder carcinoma tissue using GTX84891 ALDH1L1 antibody [6A10].


GTX84891 FCM Image

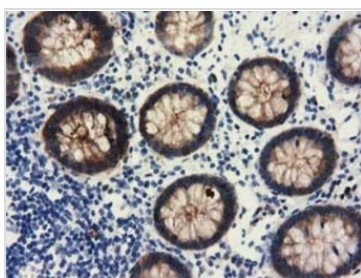
FACS analysis of HeLa cells using GTX84891 ALDH1L1 antibody [6A10].

Red : Primary antibody

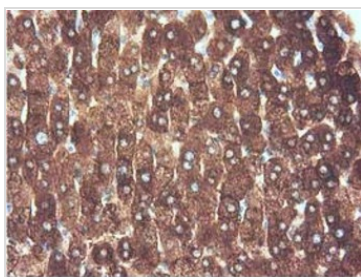
Blue : Negative control antibody


GTX84891 FCM Image

FACS analysis of HEK293T cells transfected with either ALDH1L1 plasmid(Red) or empty vector control plasmid(Blue) using GTX84891 ALDH1L1 antibody [6A10].


GTX84891 IHC-P Image

IHC-P analysis of human colon tissue using GTX84891 ALDH1L1 antibody [6A10].


GTX84891 IHC-P Image

IHC-P analysis of human liver tissue using GTX84891 ALDH1L1 antibody [6A10].



For full product information, images and publications, please visit our [website](https://www.genetex.com).