

## ALDH1L1 antibody [7G6]

Cat. No. GTX84894

Host	Mouse
Clonality	Monoclonal
Isotype	IgG2a
Applications	WB, ICC/IF, FCM
Reactivity	Human, Mouse, Dog, Monkey

Package  
100 µl

## Applications

## Application Note

\*Optimal dilutions/concentrations should be determined by the researcher.

Suggested dilution	Recommended dilution
WB	1:2000
ICC/IF	1:100
FCM	1:100

Not tested in other applications.

Calculated MW 99 kDa. ( [Note](#) )

## Properties

Form	Liquid
Buffer	PBS, 1% BSA, 50% Glycerol
Preservative	0.02% Sodium azide
Storage	Store as concentrated solution. Centrifuge briefly prior to opening vial. For short-term storage (1-2 weeks), store at 4°C. For long-term storage, aliquot and store at -20°C or below. Avoid multiple freeze-thaw cycles.
Concentration	1 mg/ml (Please refer to the vial label for the specific concentration.)
Immunogen	Full length human recombinant protein of human ALDH1L1 (NP_036322) produced in HEK293T cell.
Purification	Purified by affinity chromatography From tissue culture supernatant
Conjugation	Unconjugated

## Note

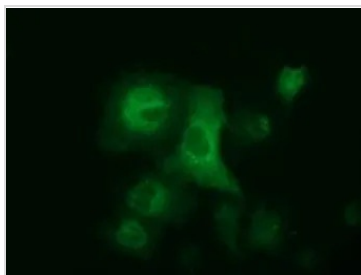
For laboratory research use only. Not for any clinical, therapeutic, or diagnostic use in humans or animals. Not for animal or human consumption.

Purchasers shall not, and agree not to enable third parties to, analyze, copy, reverse engineer or otherwise attempt to determine the structure or sequence of the product.



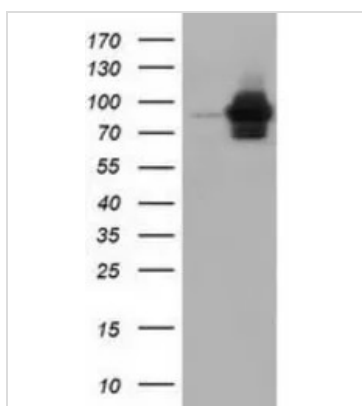
For full product information, images and publications, please visit our [website](#).

DATA IMAGES



**GTx84894 ICC/IF Image**

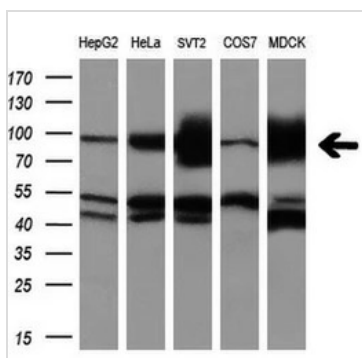
ICC/IF analysis of COS7 cells transiently transfected with ALDH1L1 plasmid using GTx84894 ALDH1L1 antibody [7G6].



**GTx84894 WB Image**

WB analysis of HEK293T cells transfected with ALDH1L1 plasmid (Right) or empty vector (Left) for 48 hrs using GTx84894 ALDH1L1 antibody [7G6].

Loading : 5 ug per lane

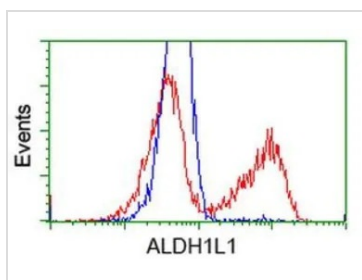


**GTx84894 WB Image**

WB analysis of various cell lines using GTx84894 ALDH1L1 antibody [7G6].

Loading : 10 ug per lane

Dilution : 1:200



**GTx84894 FCM Image**

FACS analysis of HEK293T cells transfected with either ALDH1L1 plasmid(Red) or empty vector control plasmid(Blue) using GTx84894 ALDH1L1 antibody [7G6].



For full product information, images and publications, please visit our [website](https://www.genetex.com).