

AKR1A1 antibody [8H2]

Cat. No. GTX84915

Host	Mouse
Clonality	Monoclonal
Isotype	IgG2b
Applications	WB, IHC-P, FCM
Reactivity	Human

Package
100 µl

Applications

Application Note

*Optimal dilutions/concentrations should be determined by the researcher.

Suggested dilution	Recommended dilution
WB	1:1000-1:2000
IHC-P	1:50
FCM	1:100

Not tested in other applications.

Calculated MW 37 kDa. ([Note](#))

Properties

Form	Liquid
Buffer	PBS, 1% BSA, 50% Glycerol
Preservative	0.02% Sodium azide
Storage	Store as concentrated solution. Centrifuge briefly prior to opening vial. For short-term storage (1-2 weeks), store at 4°C. For long-term storage, aliquot and store at -20°C or below. Avoid multiple freeze-thaw cycles.
Concentration	0.45 mg/ml (Please refer to the vial label for the specific concentration.)
Immunogen	Full length human recombinant protein of human AKR1A1 (NP_006057) produced in HEK293T cell.
Purification	Purified by affinity chromatography
Conjugation	Unconjugated

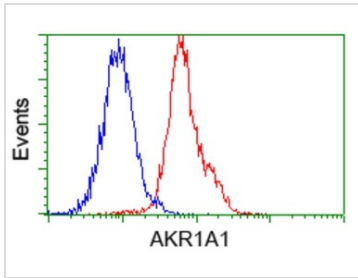
Note

For laboratory research use only. Not for any clinical, therapeutic, or diagnostic use in humans or animals. Not for animal or human consumption.

Purchasers shall not, and agree not to enable third parties to, analyze, copy, reverse engineer or otherwise attempt to determine the structure or sequence of the product.



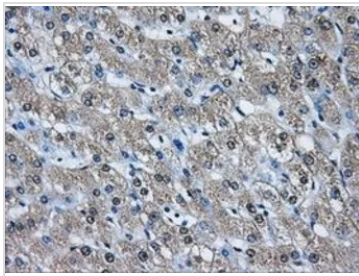
For full product information, images and publications, please visit our [website](#).

DATA IMAGES

GTX84915 FCM Image

FACS analysis of Jurkat cells using GTX84915 AKR1A1 antibody [8H2].

Red : Primary antibody

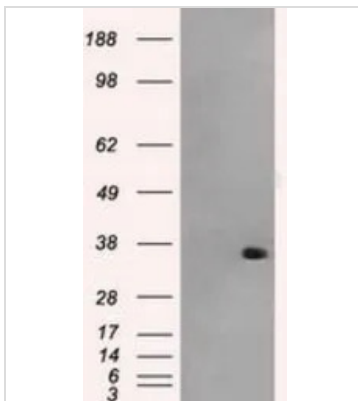
Blue : Negative control antibody


GTX84915 IHC-P Image

IHC-P analysis of liver tissue using GTX84915 AKR1A1 antibody [8H2].

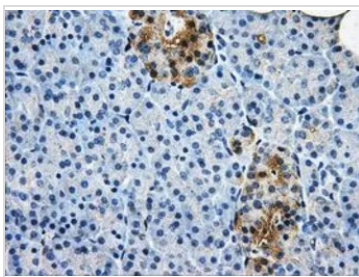
Antigen retrieval : Heat-induced epitope retrieval by 10mM citrate buffer, pH6.0, 100°C for 10min.

Dilution : 1:50


GTX84915 WB Image

WB analysis of HEK293T cells transfected with AKR1A1 plasmid (Right) or empty vector (Left) for 48 hrs using GTX84915 AKR1A1 antibody [8H2].

Loading : 5 ug per lane


GTX84915 IHC-P Image

IHC-P analysis of pancreas tissue using GTX84915 AKR1A1 antibody [8H2].

Antigen retrieval : Heat-induced epitope retrieval by 10mM citrate buffer, pH6.0, 100°C for 10min.

Dilution : 1:50



For full product information, images and publications, please visit our [website](https://www.genetex.com).